

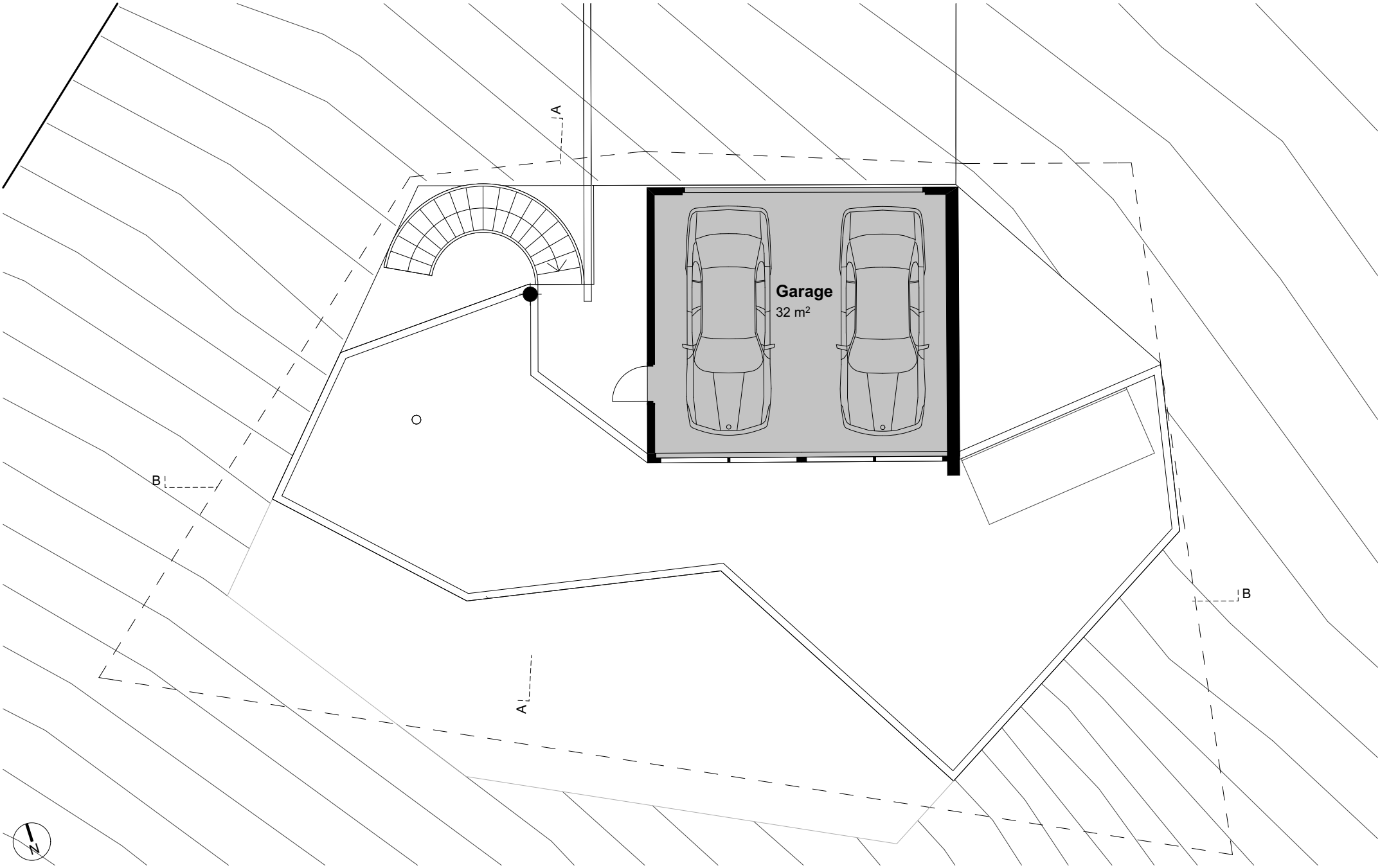
Sierre - projet de villa unifamiliale à Champpétroz

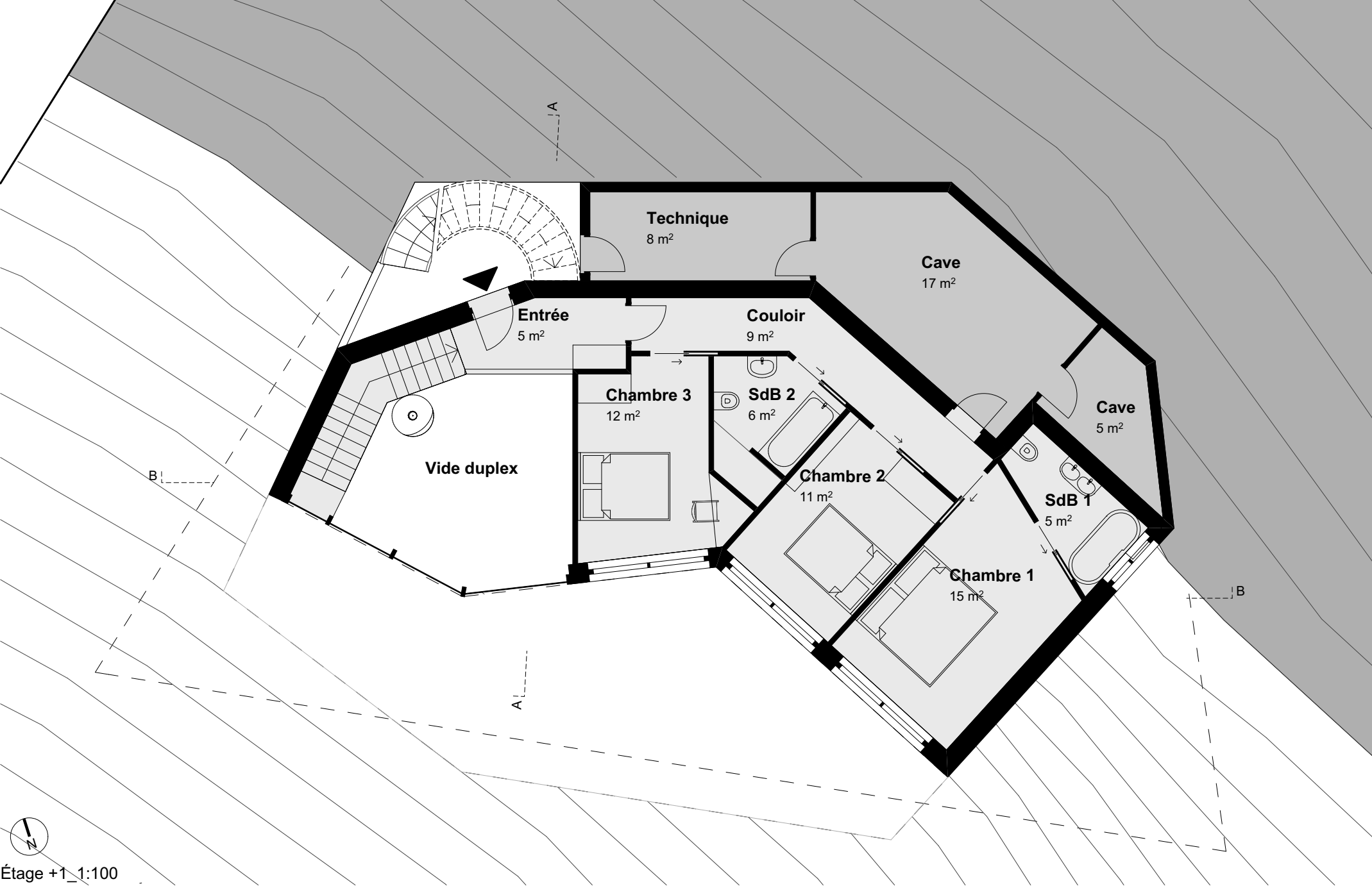
Villa A

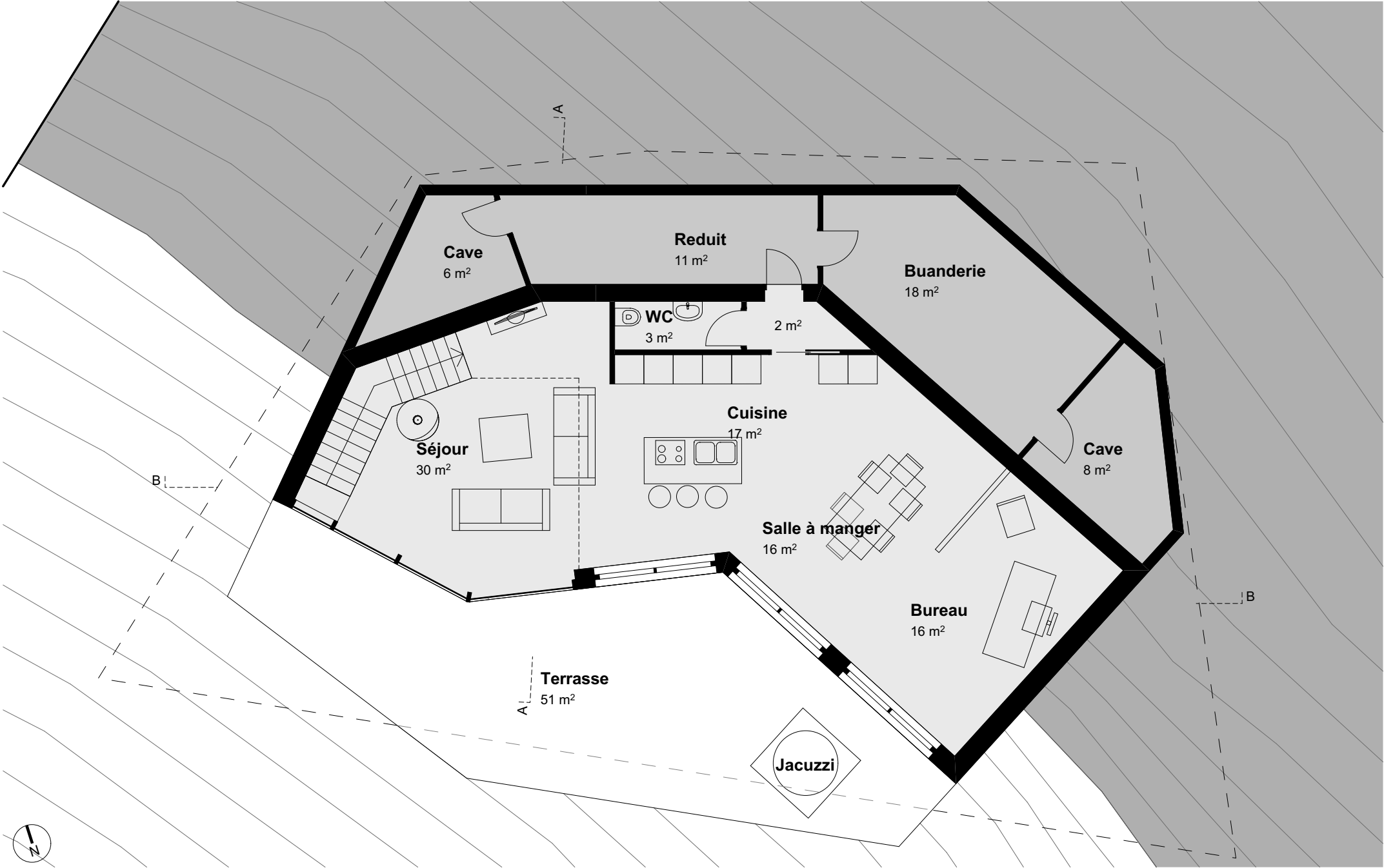


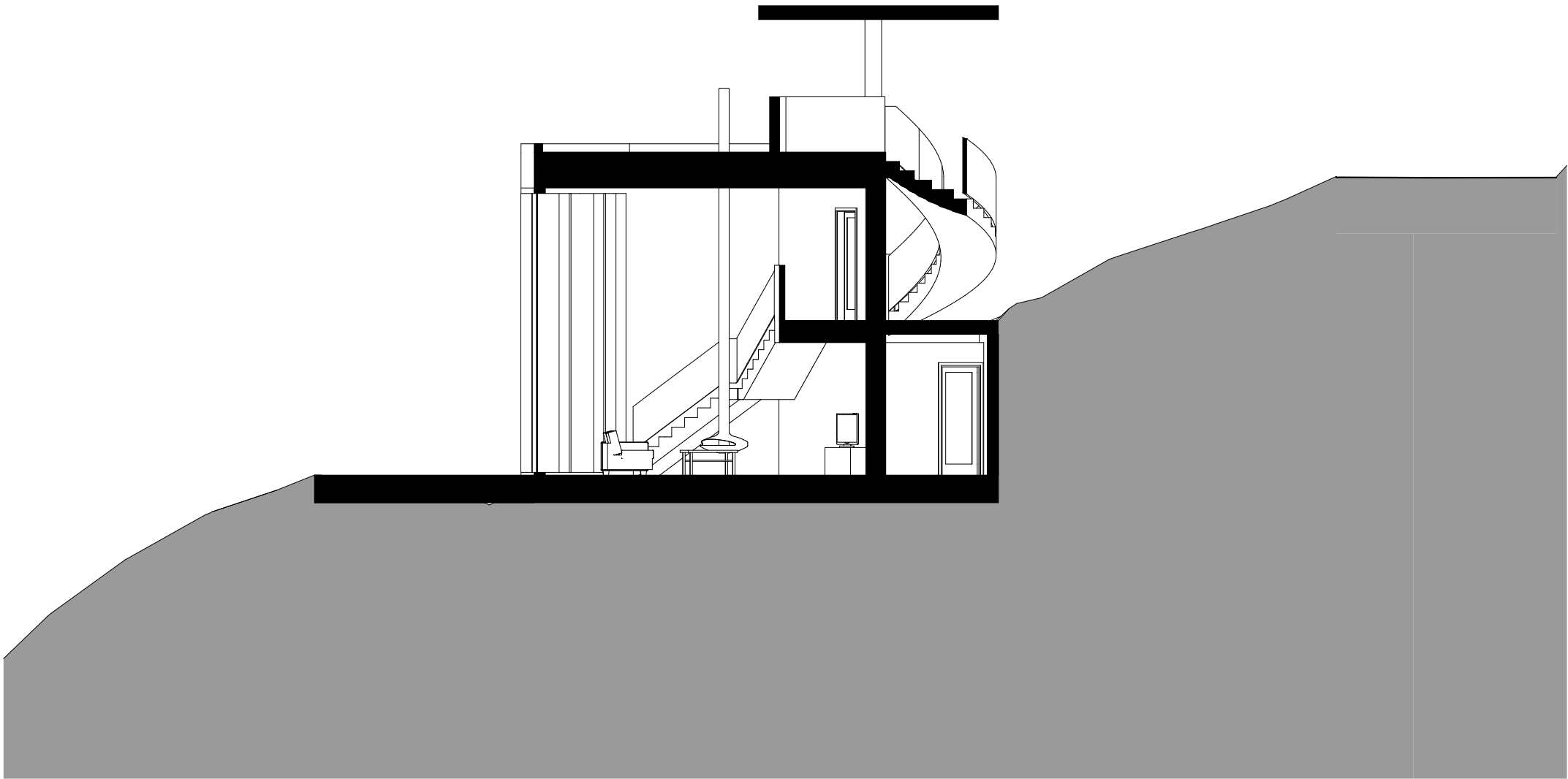
Plan de situation - 1:500



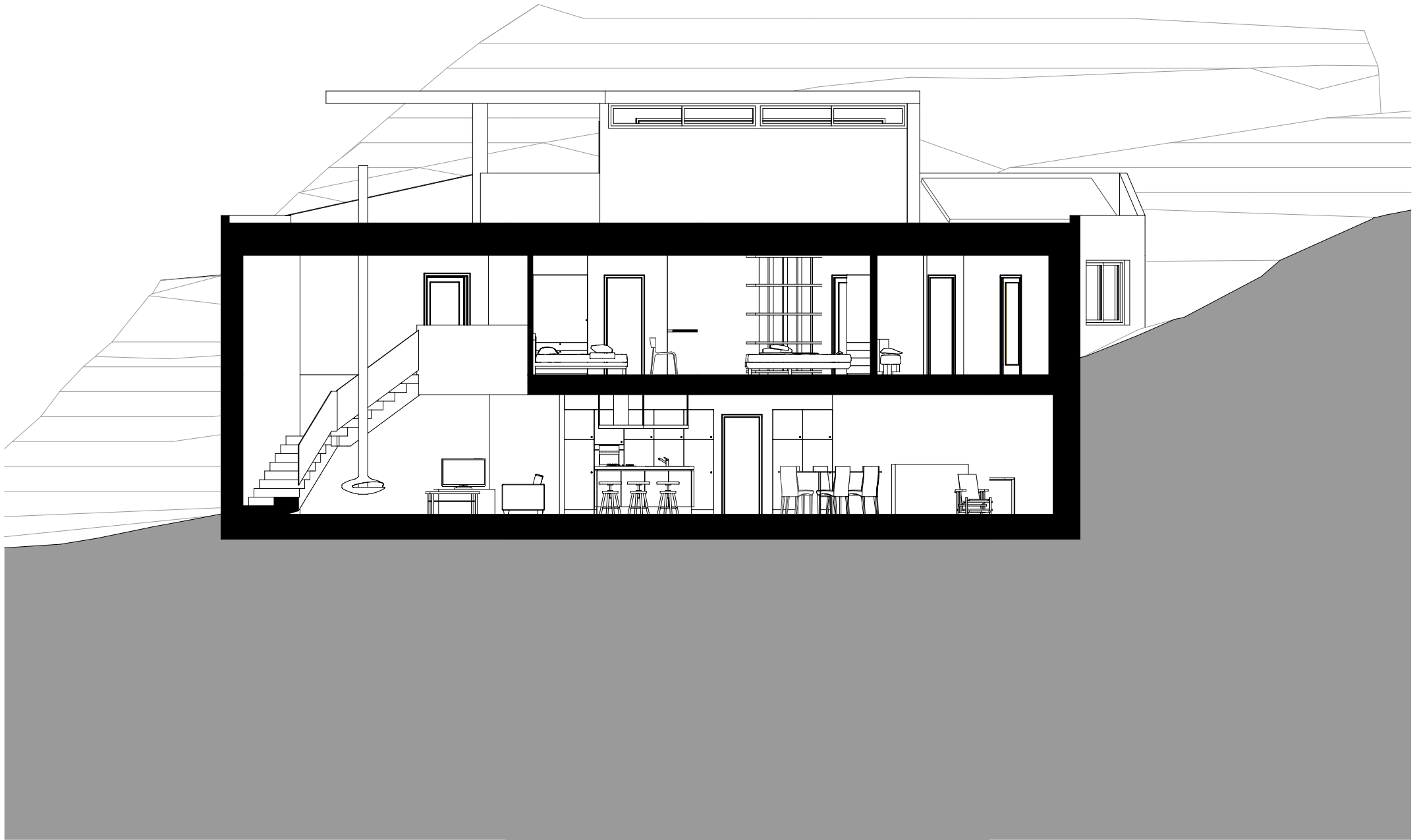




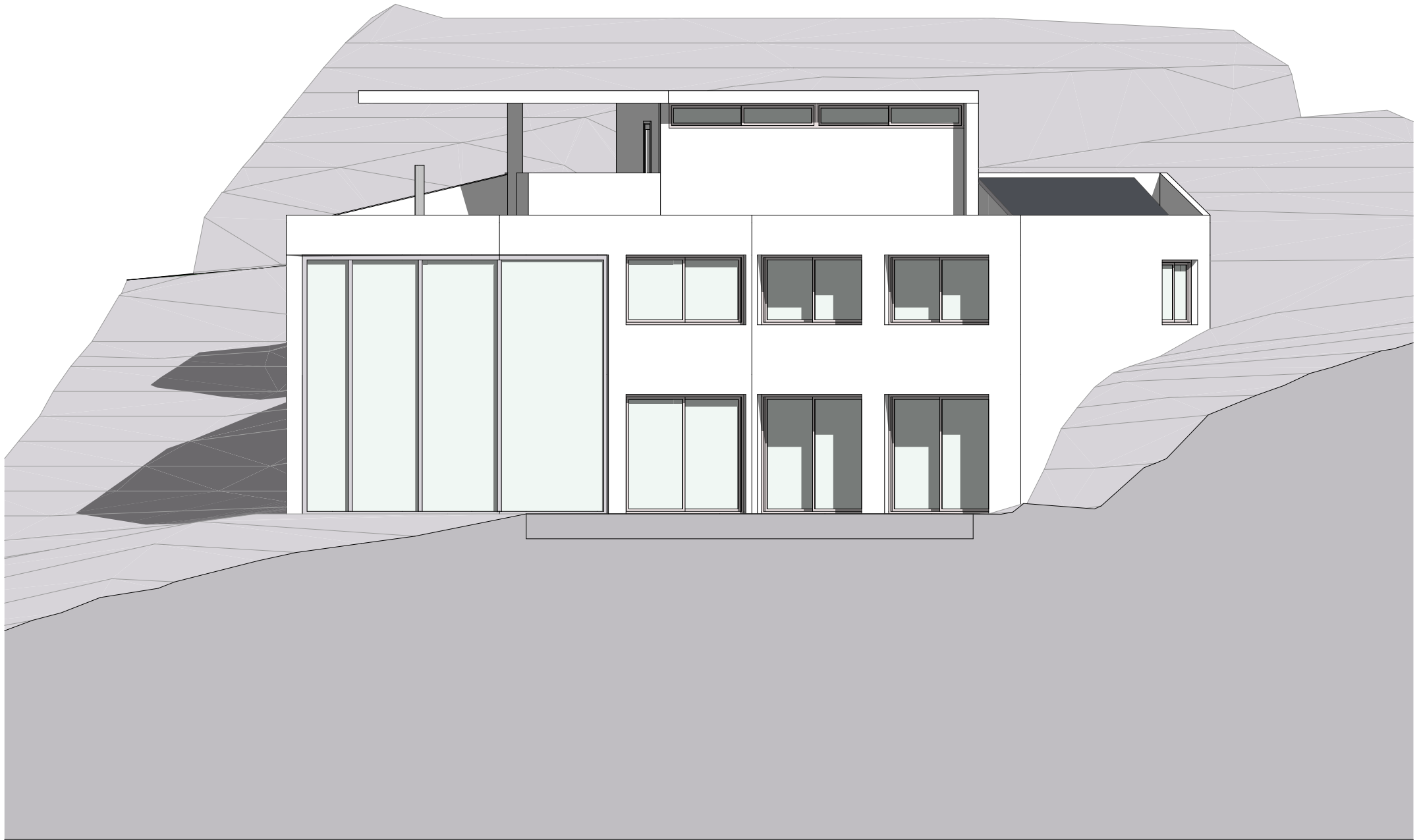


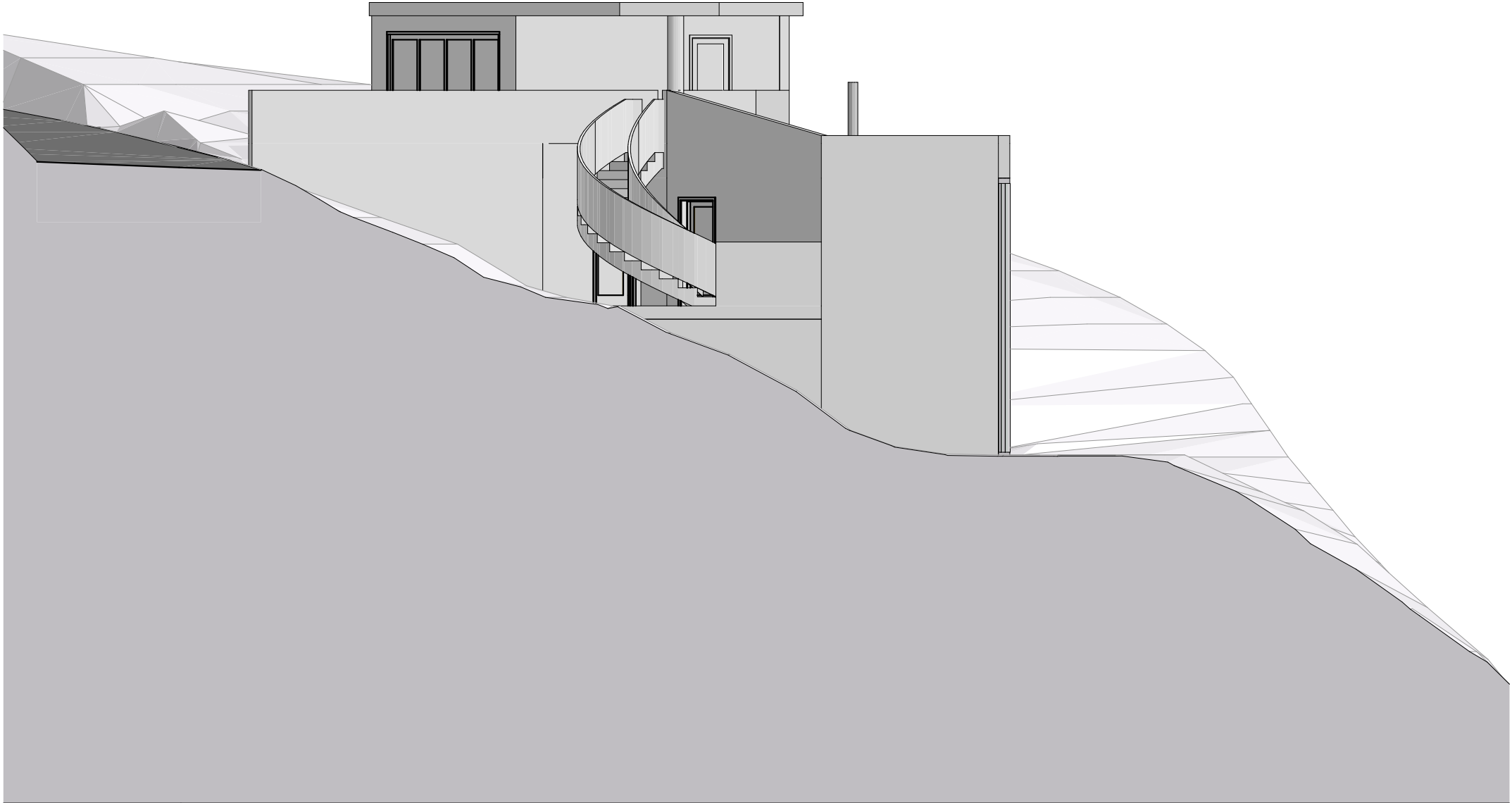


Coupe A-A'_1:100

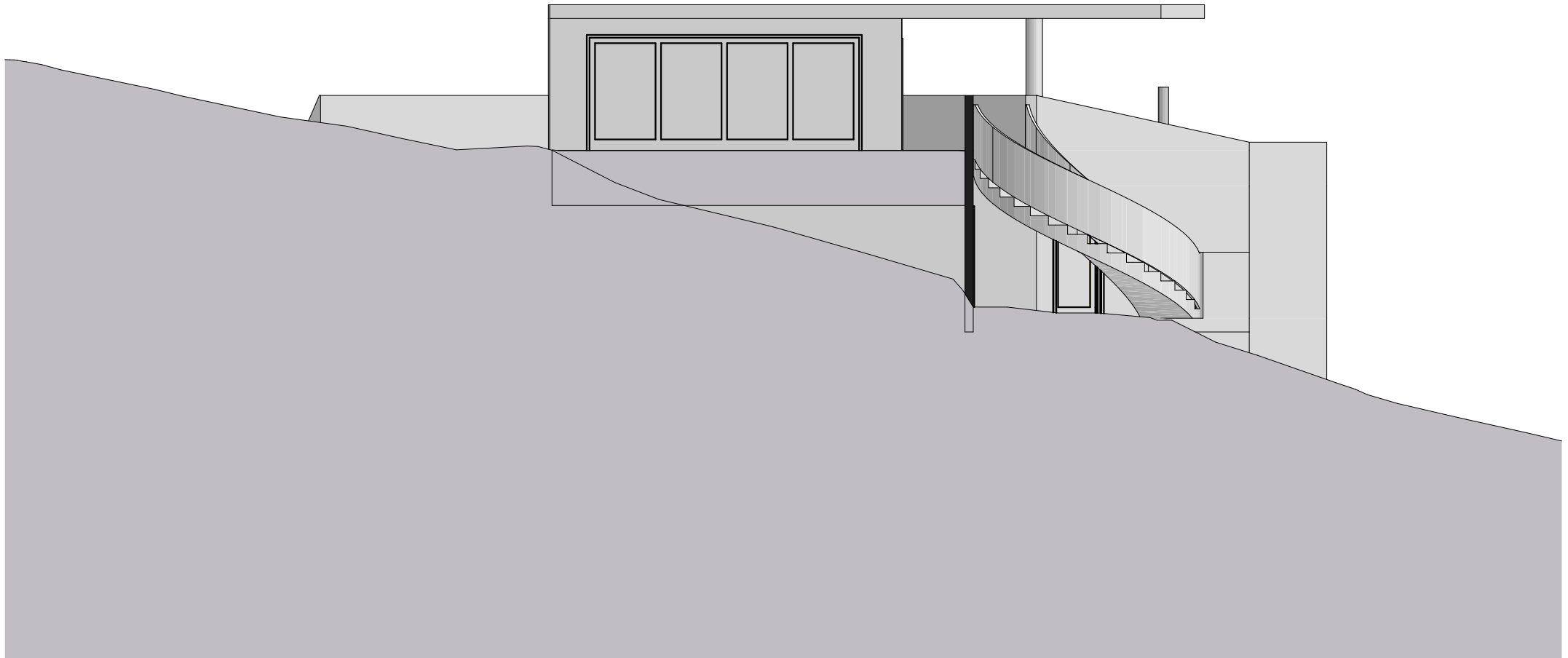


Coupe B-B'_1:100





Façade Ouest_1:100

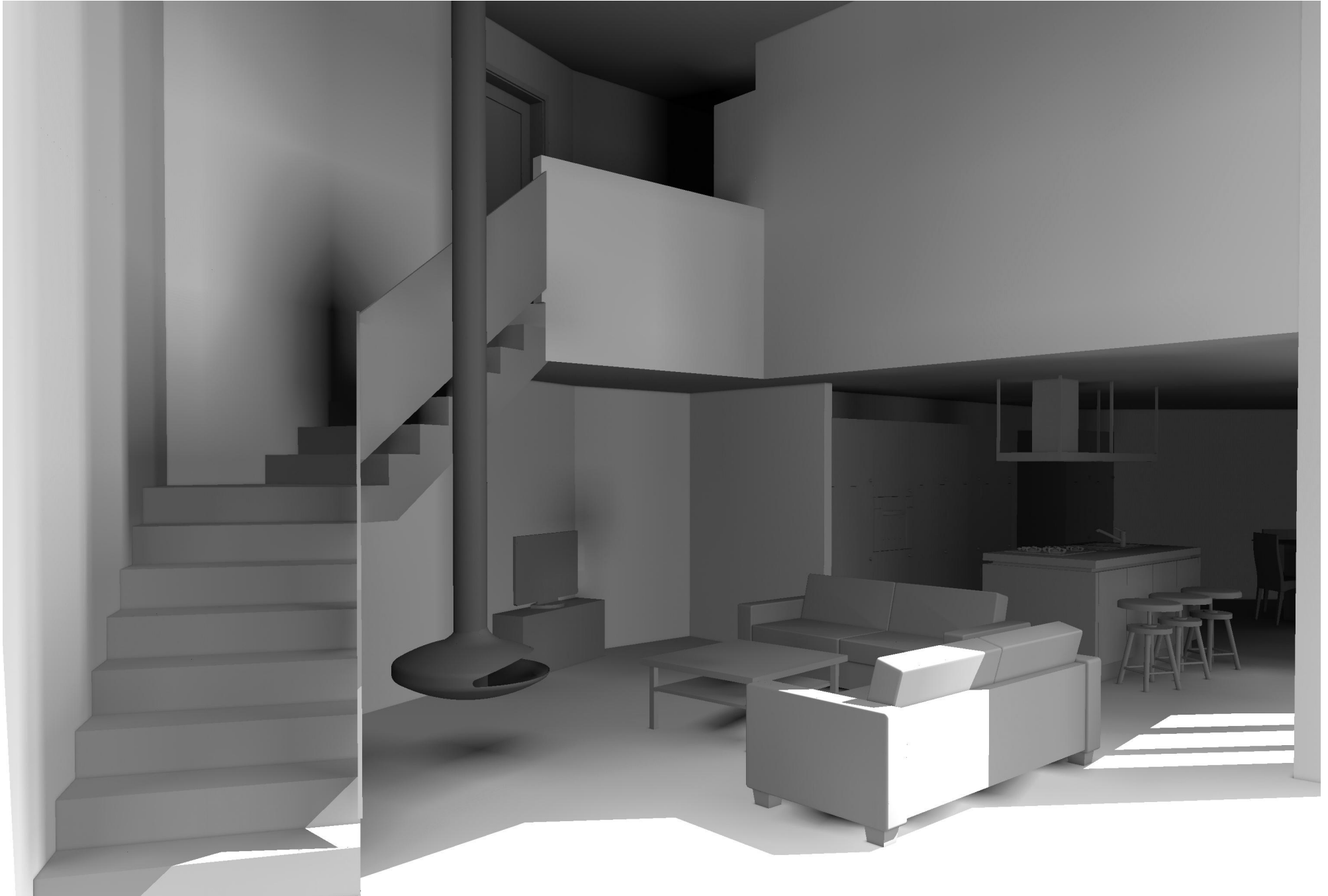




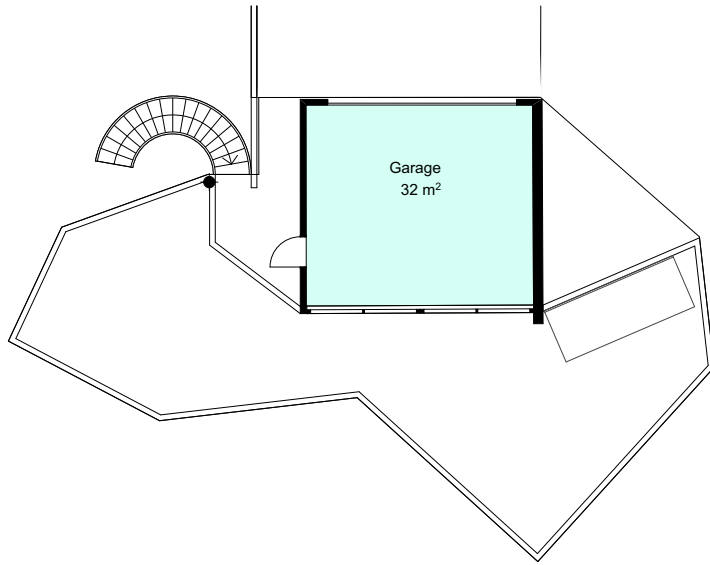
Façade Est_1:100



Vue depuis le Sud .



Vue depuis l'intérieur




Surfaces:

Étage: 81,67 m²


Rez-de-chaussée: 98,52 m²

SBP: 180,19 m² (Admise: 181.4 m²)

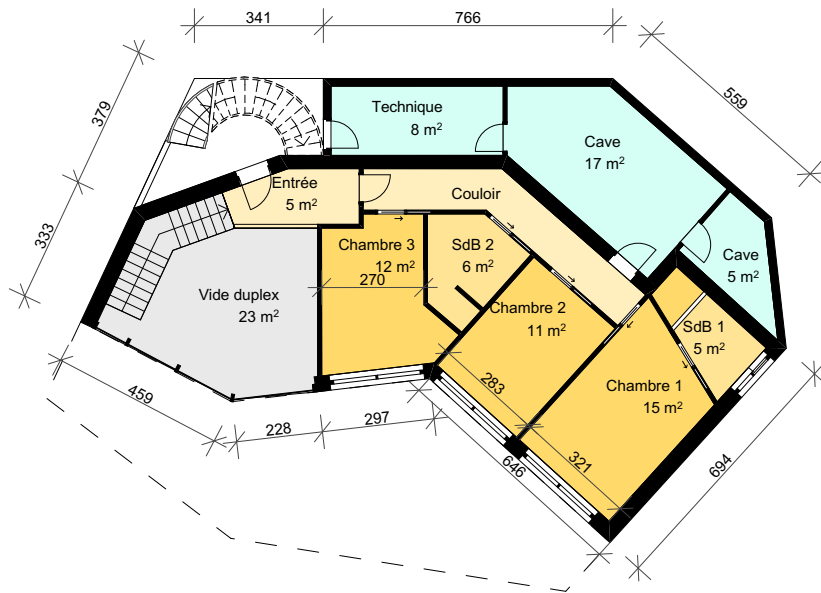
Surface non chauffée: 119,05 m²

 Espaces chauffée étage +1

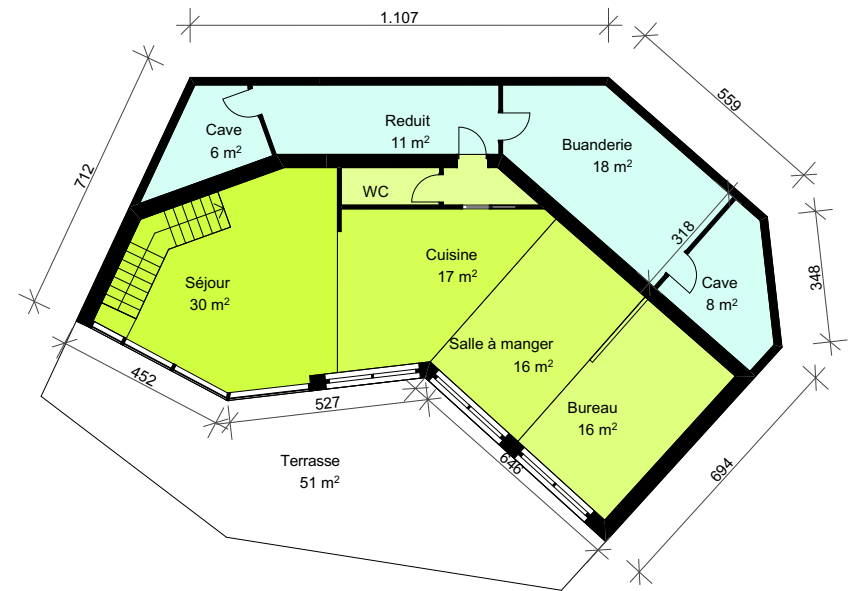
 Espaces chauffée rez-de-chaussée

 Espaces non chauffée

Étage +2



Étage +1



Rez-de-chaussée