



# R1 Manager

Version 1

## Table of contents

Machine list .....	2
Main menu .....	3
Main key .....	5
False bottom.....	5
Top bar .....	5
File .....	5
Download update.....	5
Exit .....	6
Options .....	6
Change language.....	6
Change to-.....	6
Troubleshooting .....	7

## Machine list

On the left side of the program window is the jiggling machine list. All the machines that are visible to the program are listed there. Machines are initially listed by their serial number.

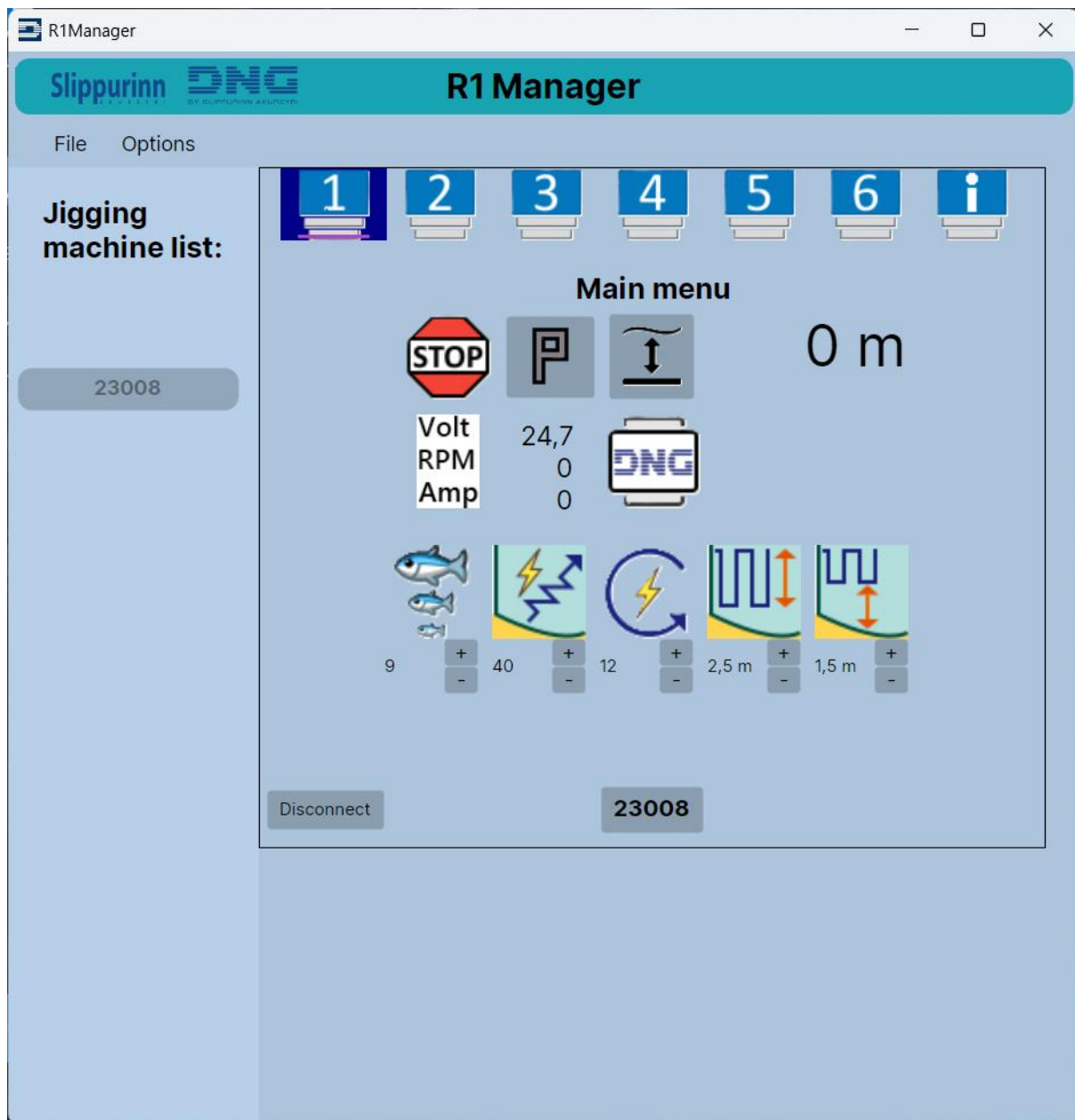
If you don't know which machine is which, you can find the machine serial number on a sticker next to the power cable on the machine. Once you know which machine is which and you've established a connection, you can rename them to your liking.

To connect to a machine, select it from the list.



NOTE: The machine needs to be connected to the same Wi-Fi network as the PC running the R1 Manager. If you've confirmed that they are connected to the same network, but the R1 Manager still cannot see the machine, restart the machine Wi-Fi by holding down the STAR key in the Wi-Fi page on the machine.

## Main menu

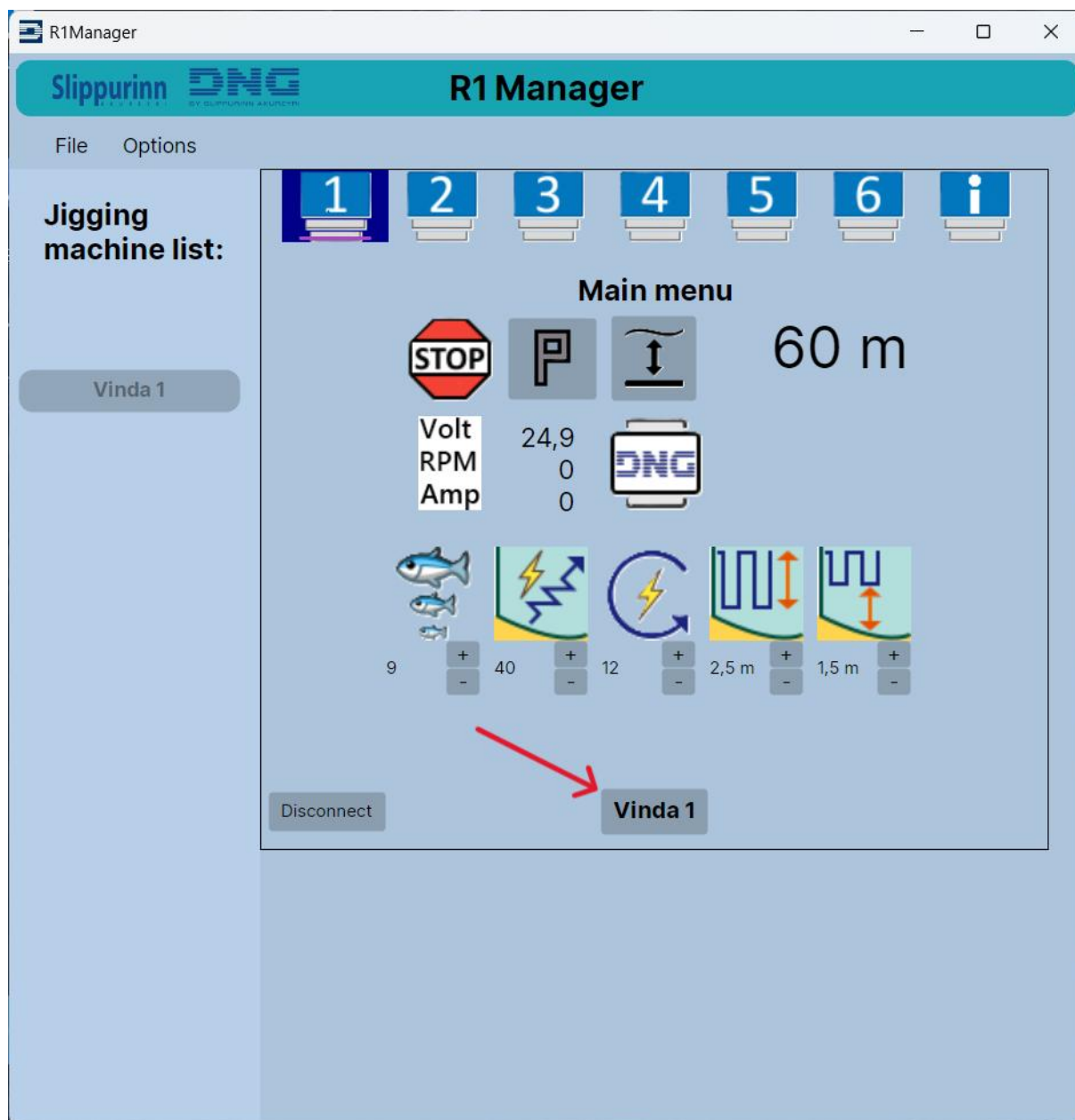


Once a machine is connected, it will appear on screen like in the picture above.

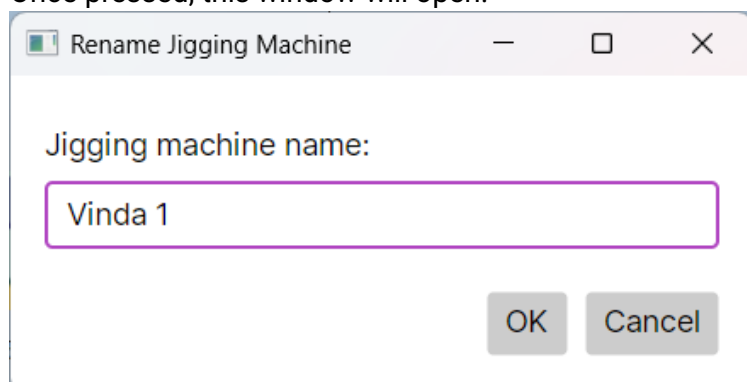
The settings are in the same place as on the machine itself and the pages can be navigated by pressing the icons in the top row.

In the bottom left corner is the “Disconnect” button used to disconnect from the machine.

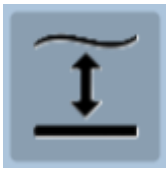
The machine can be renamed by pressing the button with the machine's name, next to the "Disconnect" button.



Once pressed, this window will open.



## Main key



Pressing the main key in the R1 Manager makes the machine behave just like as if the main key was pressed on the machine itself.

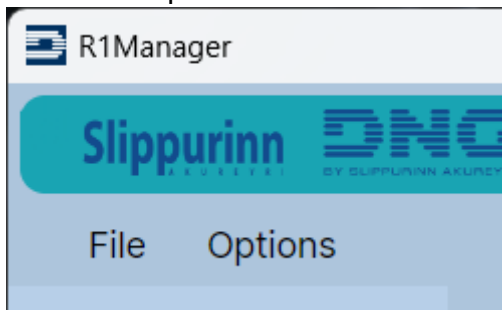
## False bottom



The large "P" button sets the false bottom at the current depth. To disable the false bottom, press the button again while the machine is paying out the line.

## Top bar

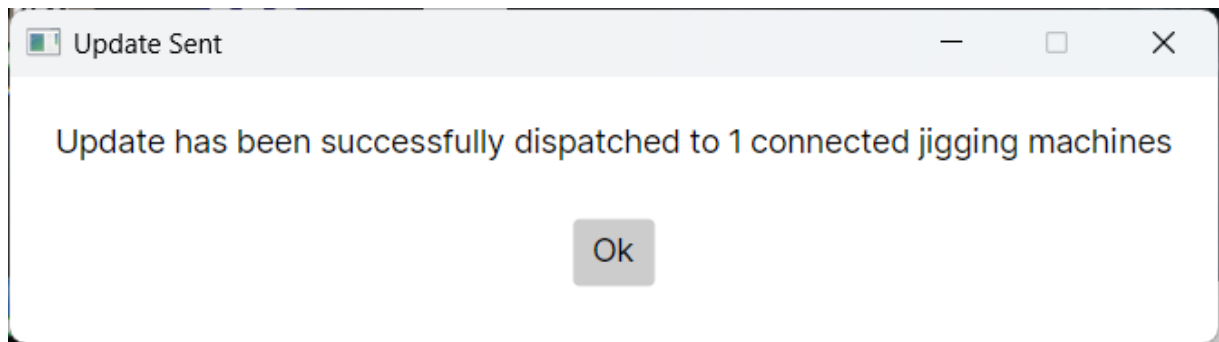
At the top of the window is a blue bar with the logos of Slippurinn and DNG. Below that are the "File" and "Options" menu.



## File

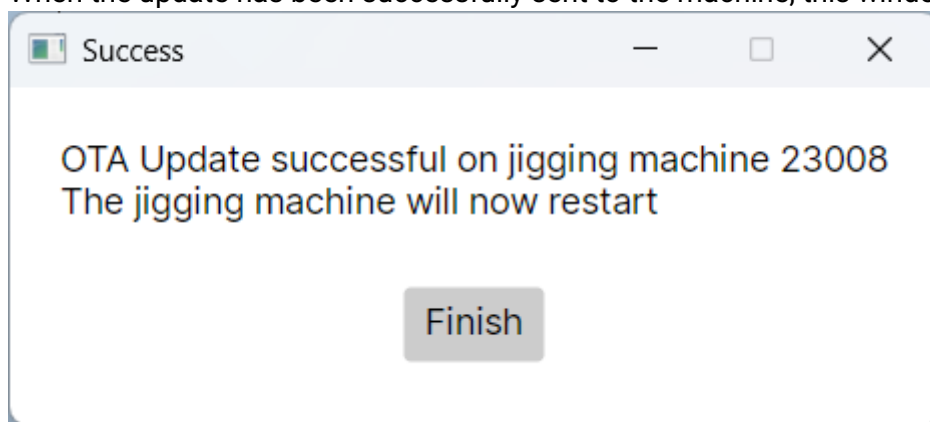
### Download update

When "Download update" is pressed, a window will open prompting you to open an update file. Find the update file you've downloaded and press "Open". The update file is always named "C7-XXX.bin" with XXX being the version number of the update. After opening the file, the R1 Manager will send the files to all connected machines.



Keep in mind that the progress of the update is not visible in R1 Manager, but you can see it on the screen of the machine being updated.

When the update has been successfully sent to the machine, this window will open.



If anything goes wrong during the update, an error window will appear with the appropriate error. Restart the machine and try again.

## Exit

Exits the program.

## Options

### Change language

Toggles between English and Icelandic.

### Change to-

The three bottom tabs under "Options", change the unit of measurement displayed to meters, feet, and fathoms respectively.

## Troubleshooting

Most problems are due to a poor network connection to the machine. Try moving the router or it's antenna closer to the machine or positioning it so there is very little metal in between them. Try putting the router or its antenna in a window facing the machines if possible.

If you have multiple machines and you are having trouble updating them, try turning off all but one machine and try to update them one by one.