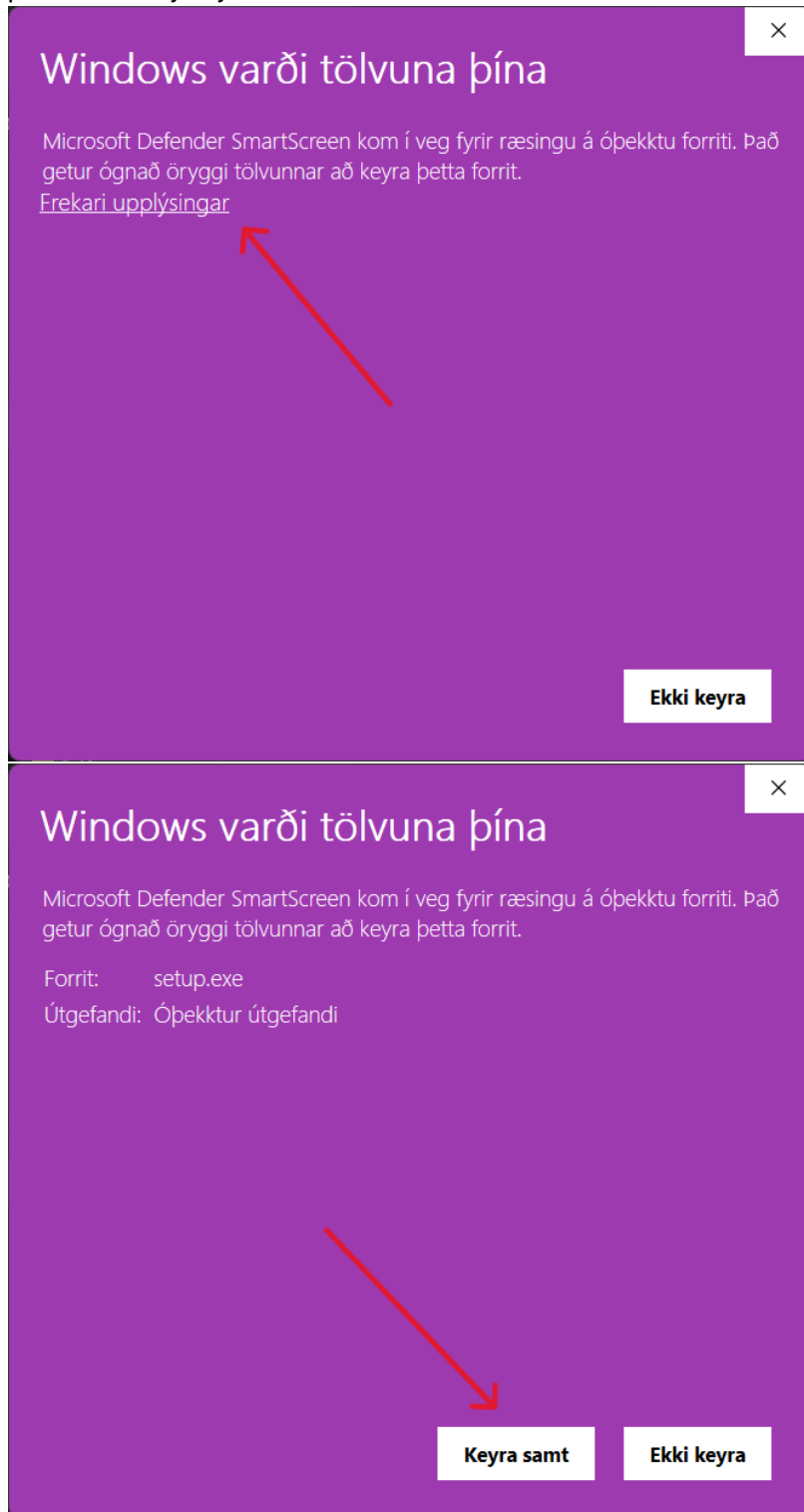


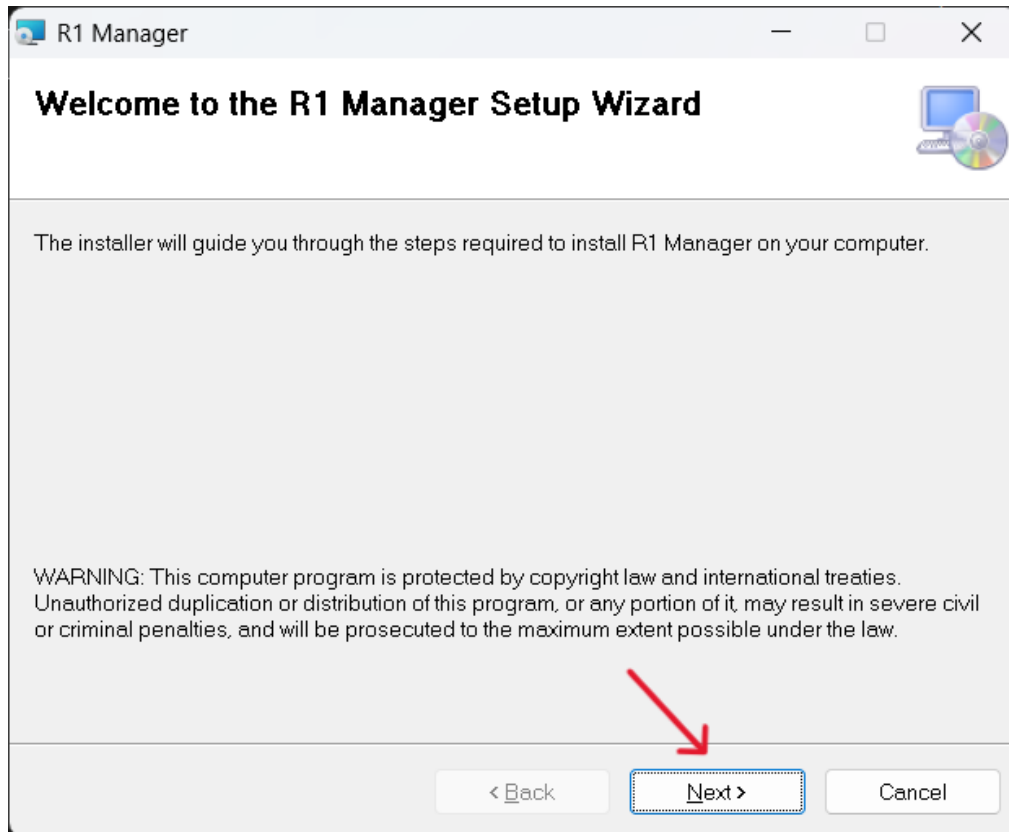


R1 Manager installation

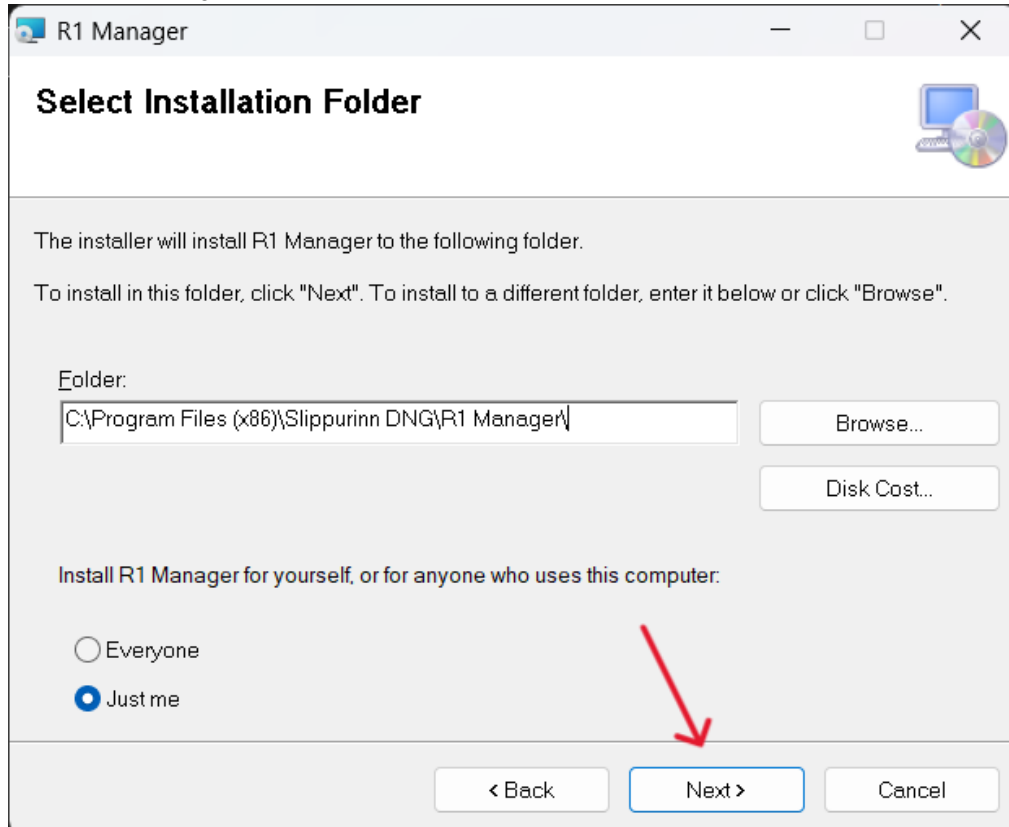
1. Run "setup.exe" by double clicking on the file.
 - a. If a Windows Security window appears during installation, press "More info" and then press "Run anyway"



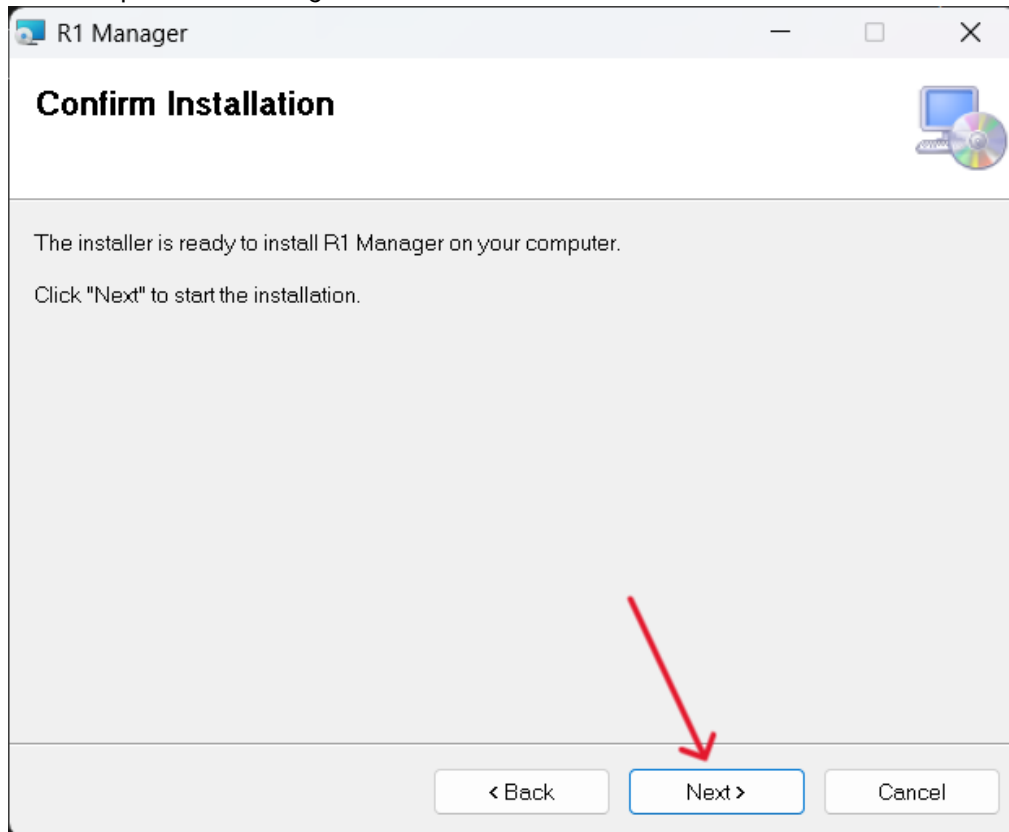
2. Press "Next >"



3. Press "Next >" again

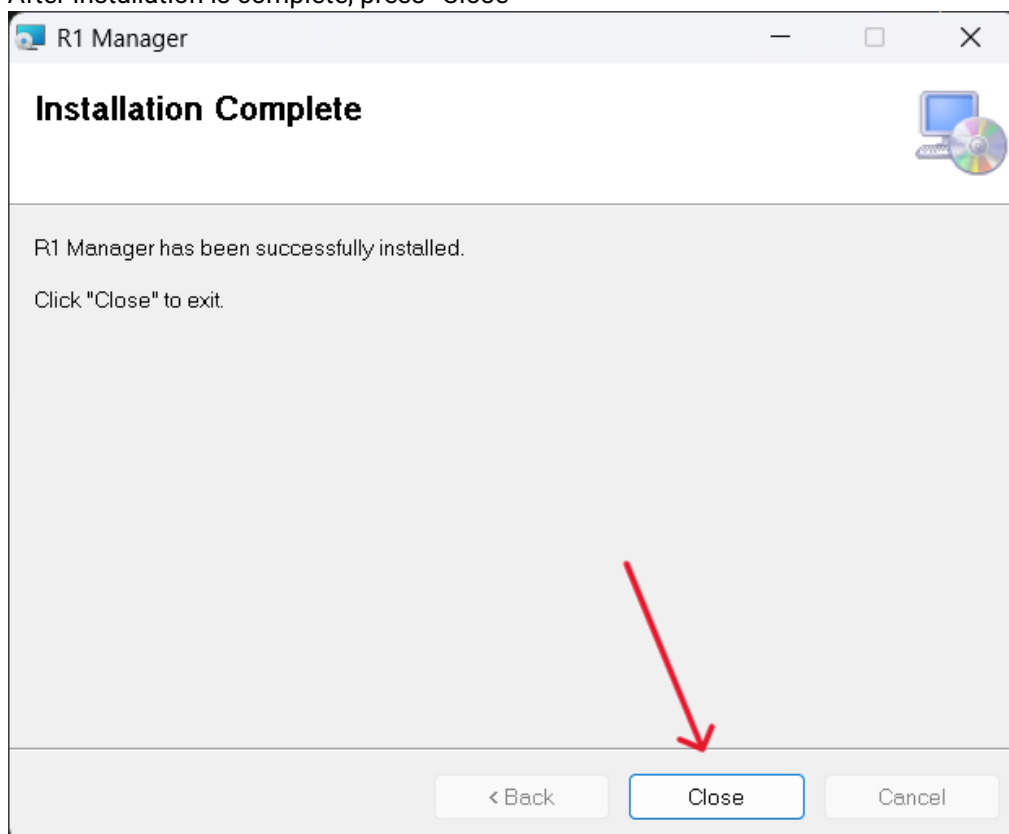


4. And then press "Next >" again



- a. A "User Account Control" window might appear. If so, press "Yes"

5. After installation is complete, press "Close"



6. When you first launch the “R1 Manager” program, a “Windows Security” window will appear asking about network access. Press “Show more” and make sure both “Private network” and “Public network” are ticked before pressing “Allow”.

