



Comefri SpA Italy

Centrifugal Fans for HVAC applications

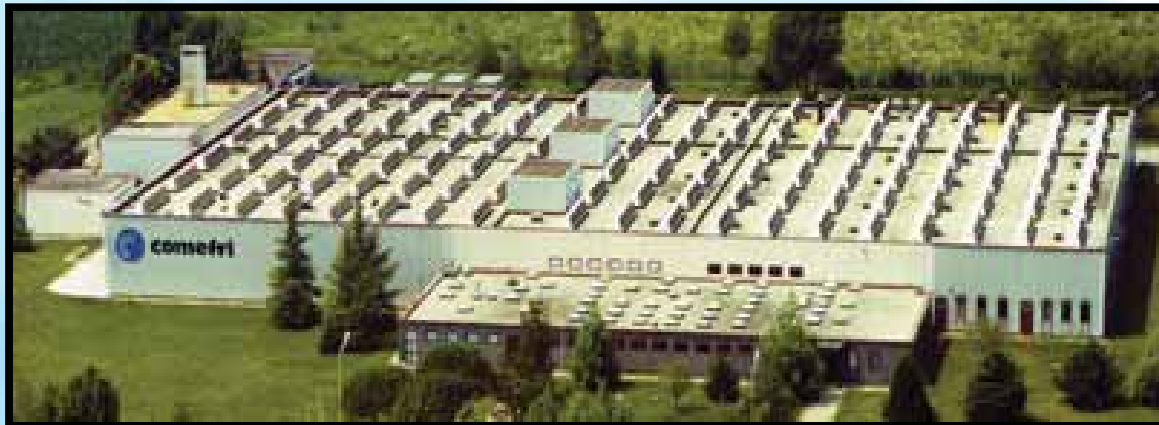
- **Magnano in Riviera**

Via Buia, 3 - 33010 Magnano in Riviera (UD)

Tel. +39 432 798811

Fax +39 432 783378

info@comefri.com



Heavy Duty Centrifugal Fans

- **Artegna**



Certifications

Certificate of Registration

Quality Management System

Certificate No: **FM 01403**

Location	Registered Activities
Comefri SpA Via Buja 3 33010 - Magnano in Riviera Udine Italy	The design and equipment. Centrifugal fans
Comefri SpA Via Buja 2 33011 - Artegna (UD) Udine Italy	The design and equipment. Centrifugal fans Includes labor functions.

Originally registered: **1 Dec 1987** Latest issue: **24 Sep 2001**

This license remains the property of BSI and shall be returned immediately upon request.
This certificate does not expire.
To check its validity telephone: +44 (0)20 8996 9001 or visit www.bsi-global.com/BusinessPartners

The British Standards Institution is incorporated by Royal Charter
Group Headquarters: 389 Chiswick High Road, London W4 4AL, UK.

Certificate of Registration

Quality Management System



This is to certify that:

Comefri SpA
Via Buja 3
33010 Magnano in Riviera
Udine
Italy

Hold Certificate No: **FM 01403**
and operate a Quality Management System which complies with the requirements of **BS EN ISO 9001:1994** for the following scope:

The design and manufacture of air moving equipment.
Centrifugal fans - 2kw to 140kw shaft power.
Includes (at the Artegna location) the laboratory and additional assembly functions.

For and on behalf of BSI:



Certification Manager, System Assessment

Originally registered: **1 Dec 1987** Latest issue: **24 Sep 2001** Page: 1 of 2




This license remains the property of BSI and shall be returned immediately upon request.
This certificate does not expire.
To check its validity telephone: +44 (0)20 8996 9001 or visit www.bsi-global.com/BusinessPartners
The British Standards Institution is incorporated by Royal Charter
Group Headquarters: 389 Chiswick High Road, London W4 4AL, UK.





ACCREDITED LABORATORY

The laboratory of
COME FRI S.p.A.
at
**33011 Artegna
(Udine) Italy Via Buia 2**

is accredited with AMCA International as being qualified to conduct tests in accordance with

**INSTALLATION TYPE B
AMCA STANDARD - Figure 14
BS 848: PART 1: Figure 26A
DIN 24 - 163 Figure 3**




APPROX. 30, 2005

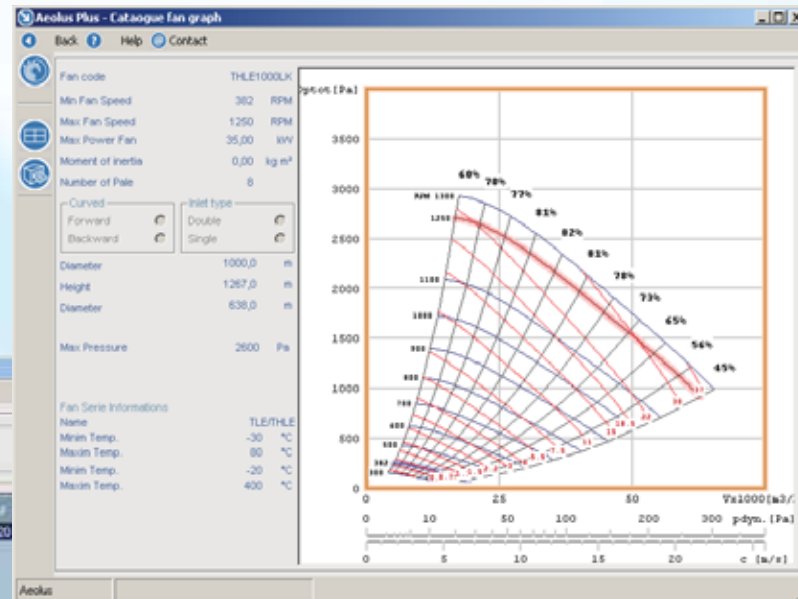
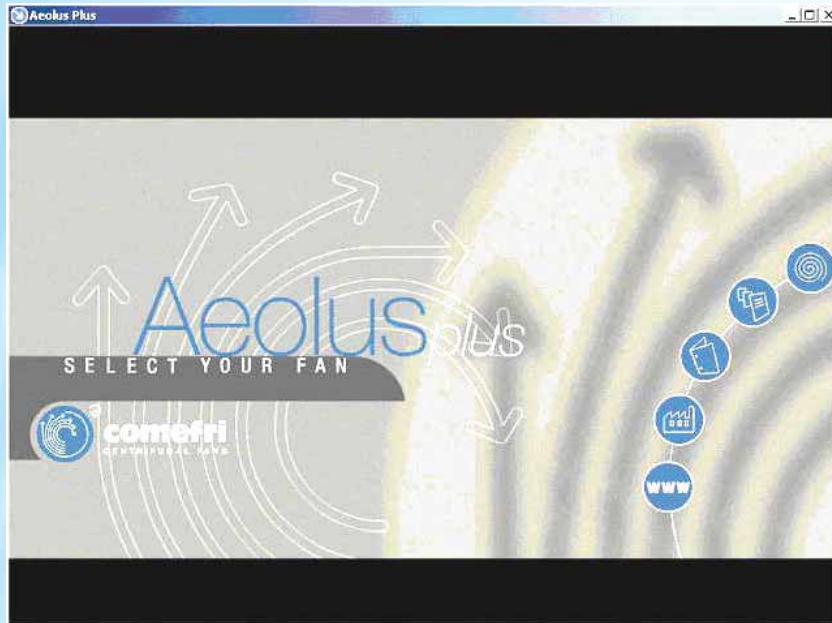
Accreditation Expires: _____

Issue: _____



Movement and Control Association International, Inc.
60 West University Drive, Arlington Heights, Illinois 60004 USA

Fan selection software: Aeolus Plus



Your Ref.	Our Ref.	Description	Fan	Volume m ³ /s	Pressure Pa	T of static	Outlet	T °C	Dev. Fan	Power	
			HLZ 560 T	12000	1500	Total	Free	20,00	0	Auto	1,20

Model	Order code	Manufacturer	Model type	Manufacturer Code	Part name	Power	Support type	Min. Safety Factor
	AD401100100	ABB	ABT	150	1500	1450	Direct	1,15

Transmission Data	Transmission results	Performance
Address type: GA Motor vol: SH Connection: L0270 Protection: S11 Red location: SPA Pinning: 00000	Fan RPM: 824 Power: W: 0,067 Volume: m ³ /h: 2732,41 Pressure: Pa: 81,548	

Fan	Price	Pw kW	Pm kW	h dyn Pa	h stat Pa	Pw max	h min	h 100 Pa	h 100 Pa	h min	h 100 Pa	h min	h 100 Pa	h min	h 100 Pa	h min	h 100 Pa
TL10 - 10 T	5001	5,20	7,50	506	2524,0	5,50	1014,0	800	274	23,7	29,0	43	16				
TL12 - 12 T	5935	5,79	5,56	255	2116,0	6,35	1322,0	800	545	22,5	26,5	59	40				
TL12 - 8 T	6962	4,05	5,50	617	2116,0	6,80	1289,0	800	303	21,8	26,4	66	26				
TL15 - 11 basic	6957	3,22	4,00	204	1800,0	3,73	1016,0	800	596	21,3	18,4	69	51				
TL15 - 11 R	5908	3,22	4,00	204	1800,0	3,73	1016,0	800	596	21,3	18,4	69	51				
TL15 - 11 T	5909	3,22	4,00	204	1720,0	3,82	1016,0	800	596	21,3	18,4	69	51				
TL15 - 15 basic	6014	3,60	4,00	126	1600,0	4,50	1070,0	800	672	22,4	14,8	72	51				
TL15 - 15 R	6016	3,60	4,00	126	1600,0	4,50	1070,0	800	672	22,4	14,8	72	51				
TL15 - 15 T	6016	3,60	4,00	126	1719,0	10,26	1070,0	800	672	22,4	14,8	72	51				
TL15 - 13 basic	6041	3,94	4,00	110	1210,0	4,50	927,0	800	690	21,9	13,5	75	65				
TL15 - 13 R	6042	2,94	4,00	110	1210,0	4,50	927,0	800	690	21,9	13,5	75	65				
TL15 - 13 T	6043	2,94	4,00	110	1515,0	10,32	927,0	800	690	21,9	13,5	75	65				
TL15 - 18 basic	6088	2,10	4,00	65	1210,0	6,34	904,0	800	725	20,2	10,4	72	66				

Research & Development: The Laboratory

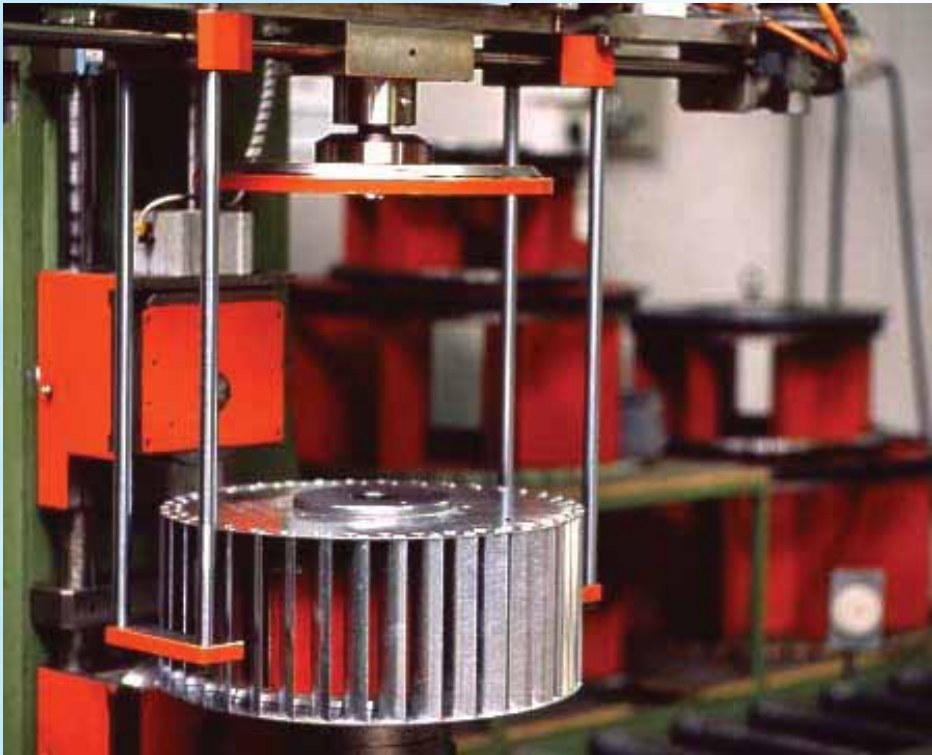


Manufacturing

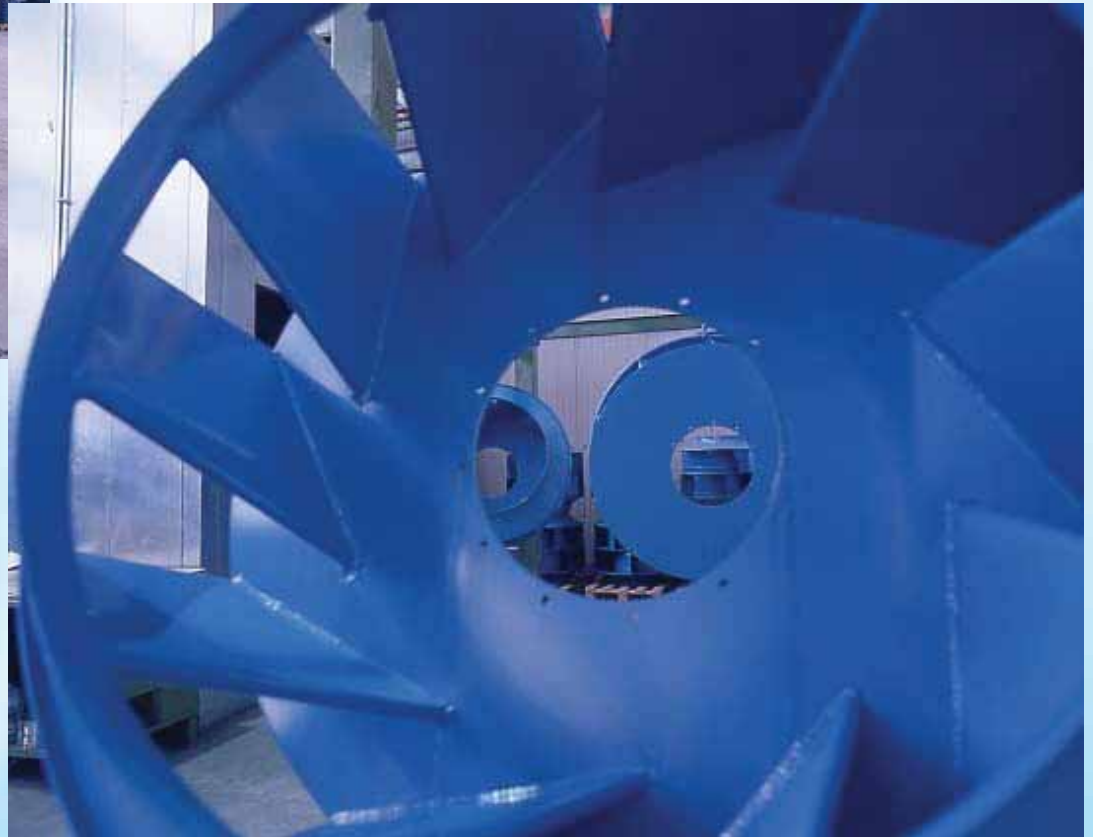


Our Products Range

Forward Curved blades



Backward curved blades



Airfoil blades





HVAC Centrifugal Fans





HVAC Centrifugal Fans: DIDW/SISW backward curved blades

*Sizes: from 180mm to 1250mm
Volume: up to 200.000 m³/h
Pressure: up to 3.700 Pa*



Double inlet:
THLZ FF



Single inlet:
THLE

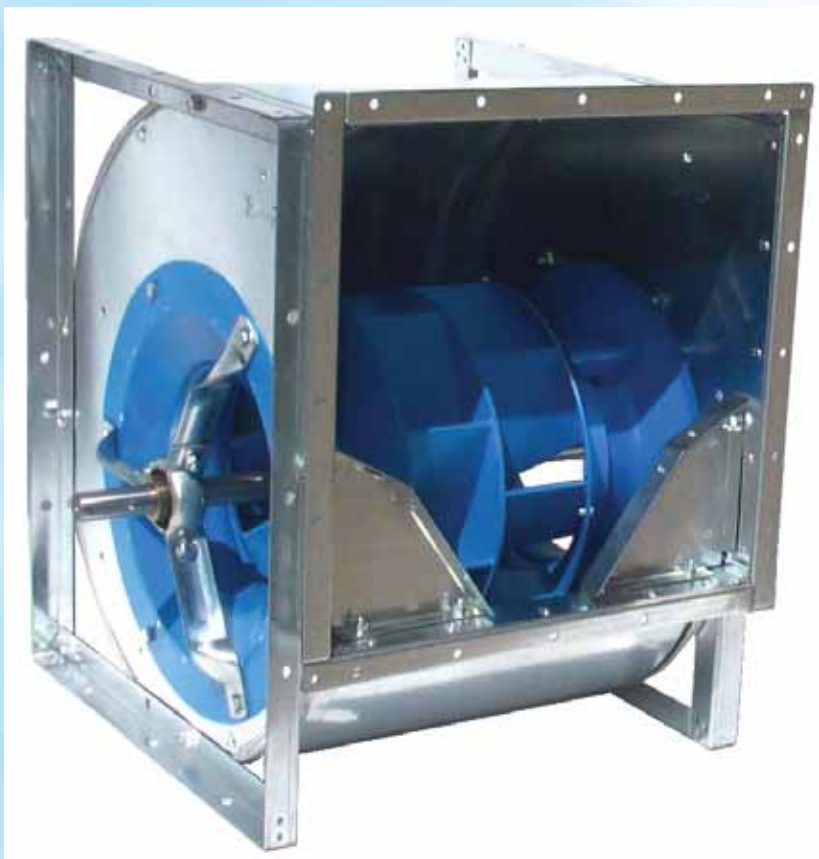


Double inlet:
VTZ



Double inlet:
NTHZ FF

HVAC Centrifugal Fans: airfoil blades



Double inlet:
TZAF FF
ATZAF FF (imperial)

Sizes: from 315mm to 1250mm

(imperial 12 – 49")

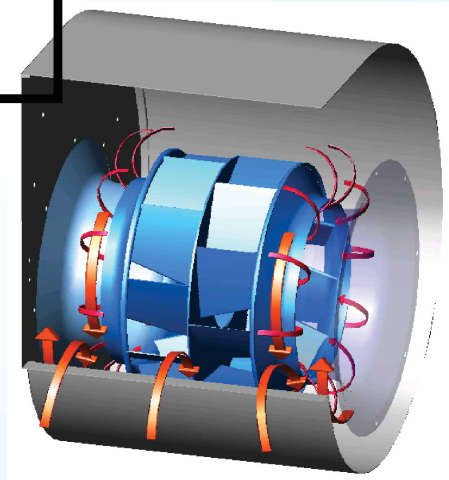
Volume: up to 200.000 m³/h

Pressure: up to 4.000 Pa

**Using Forefinger®
device**



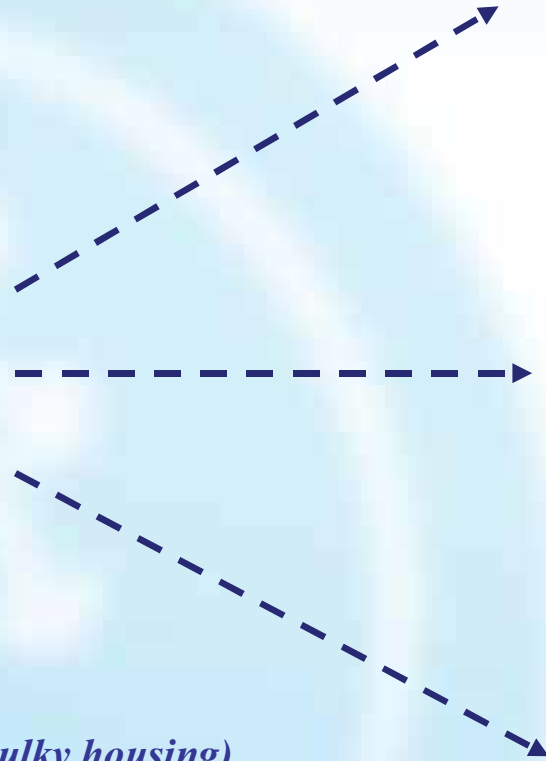
**..... as NTHZ and
THLZ FF**



- **Better efficiency**
- **Lower sound level**
- **Lower speed**

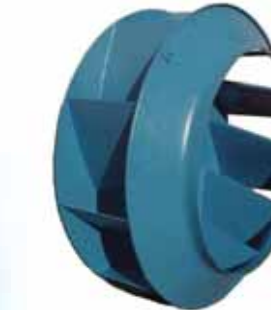
Plug Fans Family

**ONE FRAME FOR
3 IMPELLERS**



NPL
backward curved blades

Sizes: from 250mm to 1400mm
Volume: up to 135.000 m³/h
Pressure: up to 2.800 Pa



NPA (new!) airfoil
blades

Sizes: from 315mm to 1600mm
Volume: up to 150000 m³/h
Pressure: up to 2750 Pa



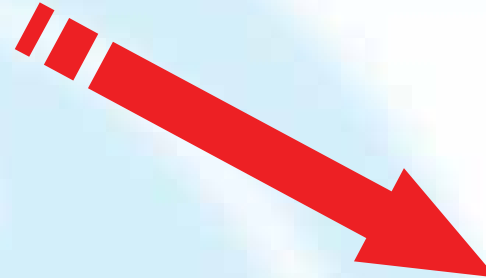
TE
backward curved blades
polyamid wheel

Sizes: from 180mm to 450mm
Volume: up to 12.000 m³/h
Pressure: up to 1.700 Pa

- less space requirements (no bulky housing)
- more flexibility in AHU design
- easier cleaning and maintenance
- better noise level control



Air handling unit



No maintenance fans



Clean room applications

Heavy Duty Industrial Fans



Industrial Fans SISW



Single inlet
backward curved blades:
BCE 25/17/15

Sizes: from 400mm to 1600mm

Volume: up to 160.000 m³/h

Pressure: up to 7.000 Pa



Single inlet
airfoil blades:
BAFE

Industrial Fans

DIDW

Sizes: from 400mm to 1800mm

Volume: up to 500.000 m³/h

Pressure: up to 4.000 Pa

Double inlet

airfoil blades:

MAZ / BZAF



Double inlet

backward curved blades:

MHZ





**Thank you for giving COMEFRI
a chance to introduce
our company and our products to you.**