



ERADDAT

GLOBAL INDUSTRIES.
مصنع الإيرادات العالمية للصناعة

WWW.ERADDATGLOBAL.COM

WHO ARE WE?

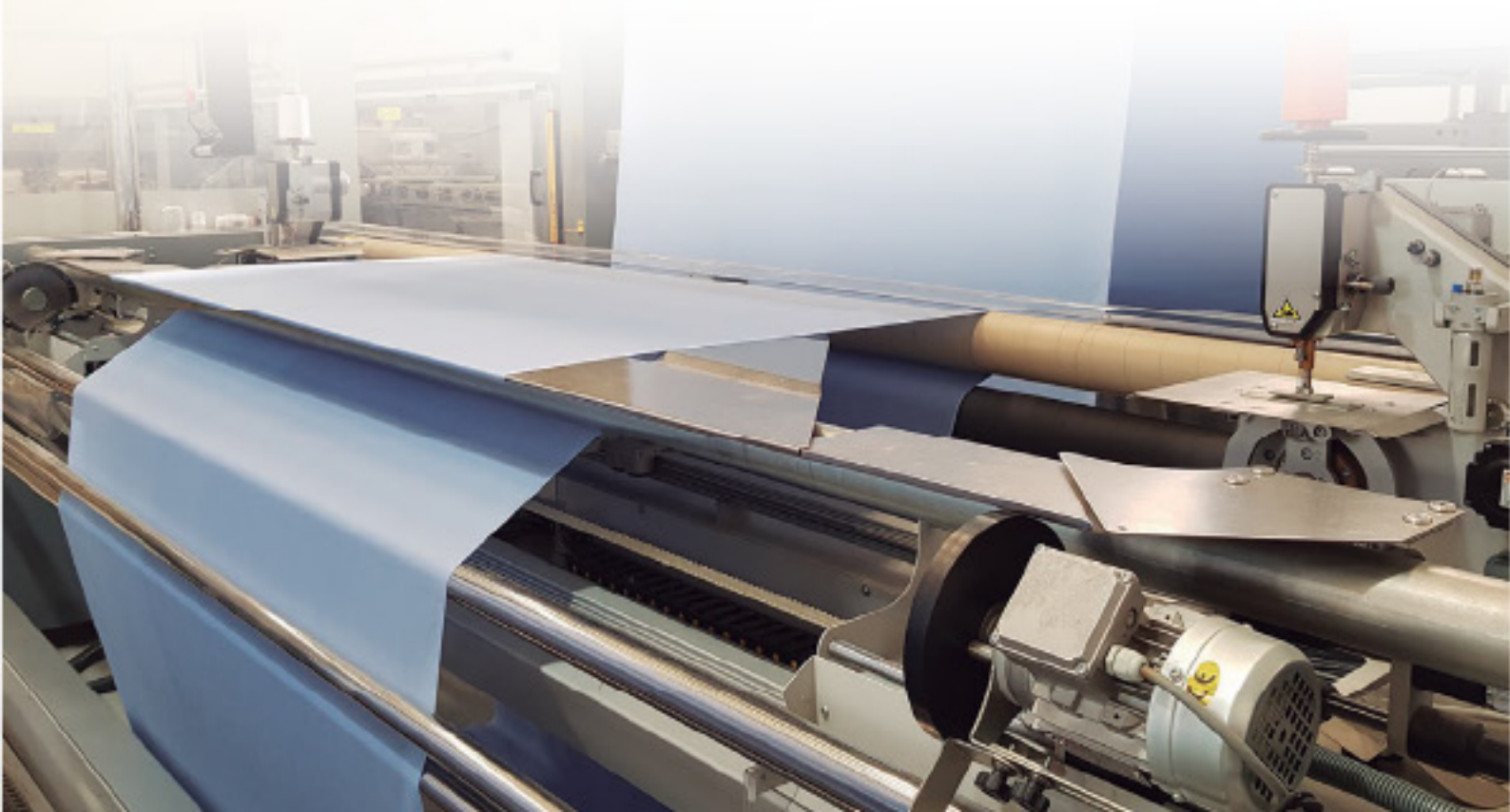
A multinational innovator in healthcare and textiles.

**Vision:**

To be a global leader in delivering innovative solutions that enhance lives and industries.

**Mission:**

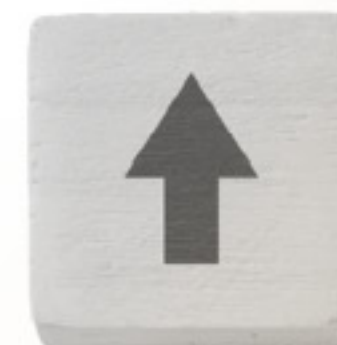
To empower businesses and communities through sustainable and high-quality products and services.



WHY ARE WE UNIQUE?

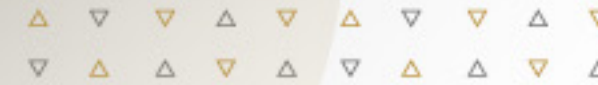
At Eraddat Global, we offer high-quality products through our brands, EraTex and EraCare. Based in Saudi Arabia, we provide medical uniforms, industrial workwear, flame-resistant (FR) apparel, and customized care kits.

We combine locally produced fabrics with premium international fabrics to ensure top quality. Our focus is on comfort, durability, and safety, delivering products that meet the needs of healthcare professionals and industries alike. With advanced manufacturing and a commitment to sustainability, we consistently exceed expectations.





ERA Tex focuses on durable and protective industrial wear, providing customized uniforms and safety solutions.



WHAT DO WE OFFER?

At EraTex, we provide a comprehensive range of uniforms tailored to the unique requirements of different industries. Our offerings include medical uniforms, industrial workwear, and flame-resistant (FR) apparel, all designed for comfort, safety, and functionality. Whether it's healthcare professionals, industrial workers, or service staff, we ensure our uniforms meet the highest standards of quality and practicality.



OUR WORK PROCESS

1. CONSULTATION

We start with initial Free consultation from our team to understand the uniform needs of your employee.

3. PRODUCTION

In this phase we start with fabric inspection, fabric spreading, fabric cutting with cutting machine, garment stitching and garment embroidery if the design needs.

5. DELIVERY

We deliver your order to your location, or we have shipment service to your city.

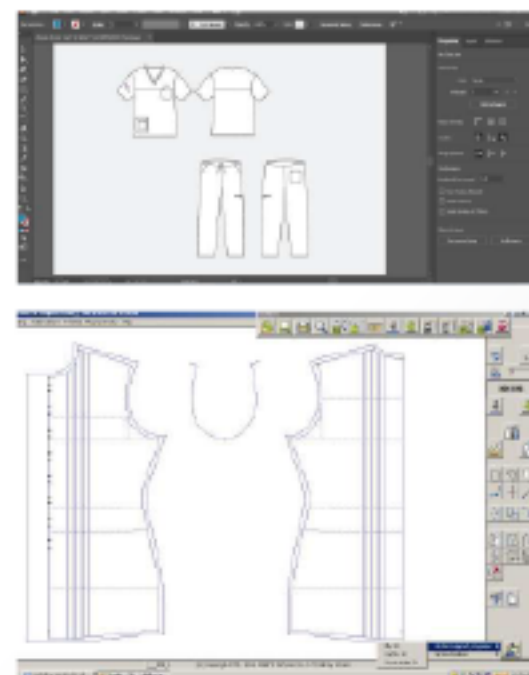


2. DESIGN

For Product designing and pattern making, we use CAD (computer-aided design) and we print the pattern in a plotter machine.

4. CARE

After the garment is finished we have QI unit for garment checking, garment pressing, repair work, garment folding, and packing.



PARTNERS WHY TRUST US?

At ERA Tex, we understand that trust is earned through consistency, quality, and results. That's why our partners rely on us for reliable, high-performance uniforms and protective wear that meet the strictest industry standards.

We combine advanced manufacturing techniques, rigorous quality control, and deep industry knowledge to deliver products that not only meet expectations—but exceed them. Our commitment to timely delivery, customization, and long-term support ensures our partners feel confident and secure with every order.

Choosing ERA Tex means choosing a partner who prioritizes safety, durability, and brand integrity. We don't just supply uniforms—we protect your people, your image, and your peace of mind.

د. سليمان الحبيب
DR SULAIMAN AL HABIB
مجموعة الحبيب

مستشفى المواساة
Mouwasat Hospital

مساند
musanadah

Johns Hopkins
Aramco Healthcare

مجموعة موسى الصحية
Almoosa Health Group

مستشفيات المانع
Almana Hospitals

مستشفى جاما
Gama Hospital

مستشفى دلة
Dallah Hospital

ACT GROUP CO.
الشركة العربية الموحدة

مستشفى السلام
Al-Salam Hospital

UNITED CATERING
RYDAHAC

شركة ميدان جودا لخدمات البناء والبناء
Abdelkhalik A. Al-Barak & Sons Co.

MMC
شركة محمد مناهد للمقاولات
Mohammed Mujahed Contracting Co.

مستشفى الملك فهد التخصصي
King Fahad Hospital The University
مستشفى الخدمات الصحية الخاصة
Private Health Services Center

تقدير
TAQDEER

مستشفى الملك فهد التخصصي
King Fahad Hospital The University
مستشفى الخدمات الصحية الخاصة
Private Health Services Center



WHY CHOOSE ERA TEX?

Renowned for reliability, innovation, and adherence to the highest safety standards.

ERADDAT
GLOBAL INDUSTRIES.
مصنع الإبرادات العالمية للصناعة



PRODUCTS

Hospital Wear:

Scrubs, lab coats, patient gowns & more.

Industrial Uniforms:

Flame-resistant (FR) coveralls, workwear.

Facilities Wear:

Hospitality & Education Uniforms.



SCRUB SUIT

Comfortable | Fashionable

Comfort Scrub (Soft and breathable)

- 65% Polyester
- 35% Cotton

Features

- Breathable fabric for all-day comfort
- Natural soft feel on the skin
- Easy to wash and maintain

Flex Scrub (Flexible and durable)

- 76% Polyester
- 20% Rayon
- 4% Spandex

Features

- 4-way stretch for maximum mobility
- Moisture-wicking to keep you dry
- Wrinkle-resistant and long-lasting

V-NECK TOP WOMEN'S

- Two front lower pockets with utility loop
- one pen slot, and one cell phone pocket
- Soft line V-neck shape
- Vented sides



WOMEN'S CLASSIC FIT
XXS - 2XL

Available Colors:
Customized



V-NECK TOP UNISEX

- One double chest pocket with utility loop
- Vented sides



WOMEN'S CLASSIC FIT
XXS - 2XL

Available Colors:
Customized



MOCK WRAP TOP WOMEN'S

- Two front lower slash pockets
- One cell phone pocket at right pocket
- Slimming, sporty princess seam lines for added shape
- Vented sides



WOMEN'S CLASSIC FIT
XXS - 2XL

Available Colors:
Customized



SNAP FRONT TOP WOMEN'S

- Two front lower pockets with utility loop, one pen slot, and one cell phone pocket
- Easy front snap closure
- Vented sides

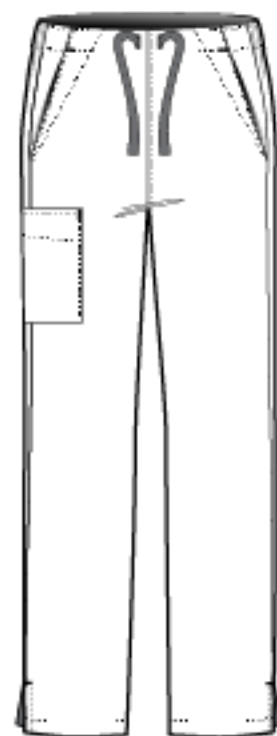


WOMEN'S CLASSIC FIT
XXS - 2XL

Available Colors:
Customized



DRAWSTRING PANT WOMEN'S



Straight Leg

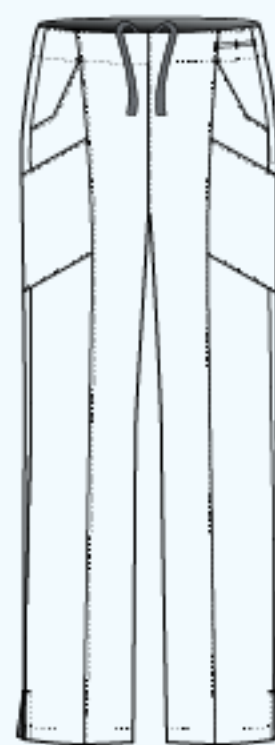
WOMEN'S CLASSIC FIT
XXS - 2XL

Available Colors:
Customized

- Flat front webbed drawstring
- Two front slant pockets with deco stitching
- one cargo pocket, and one back pocket with deco stitching
- Vented bottom



CARGO PANT WOMEN'S



Straight Leg

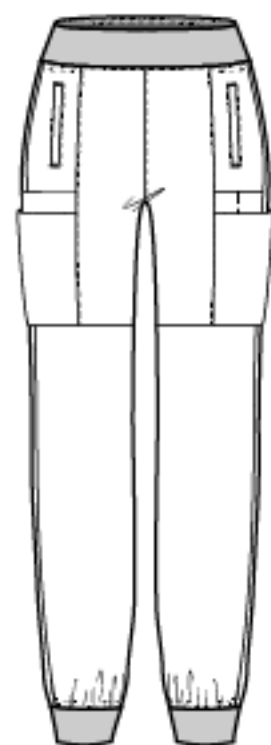
WOMEN'S CLASSIC FIT
XXS - 2XL

Available Colors:
Customized

- Flat front full elastic waist with inside webbed drawstring
- Two front slant pockets, two stylized cargo pockets, one cell phone pocket, and two back pockets with pen slot
- Utility loop at waist
- Vented bottom



CARGO JOGGER PANT
WOMEN'S
COMFORT WAIST



Jogger Leg

WOMEN'S CLASSIC FIT
XXS - 2XL

Available Colors:
Customized

- Dyed-to-Match knit yoga waist with interior control tie
- Two front welt pockets with runners pocket along back waist, and two cargo pockets with three accessory pockets
- Slim leg jogger fit with knit cuff at bottom hem



MEN'S V-NECK TOP

- One chest pocket with pen slot
- Double badge loop at shoulder
- Logo embroidery at pocket
- Vented sides

MEN'S MODERN FIT
XS - 5XL

Available Colors:
Customized



MEN'S V-NECK TOP KNIT PANEL



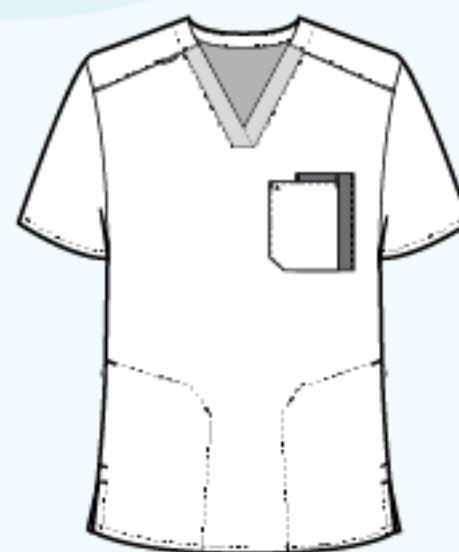
- Two front lower pockets and one double chest pocket with utility loop
- Modified V-neck and shoulder detail for a sporty, masculine look
- Longer back length and vented sides



MEN'S MODERN FIT
XS - 5XL

Available Colors:
Customized

MEN'S V-NECK TOP



- Two side entry zip closure pockets and double chest pocket with pen slot
- Shoulder badge loop
- Dyed-to-match flat back rib knit racer back panel for wider range of motion
- Vented sides



MEN'S MODERN FIT
XS - 5XL

Available Colors:
Customized



LAB COATS

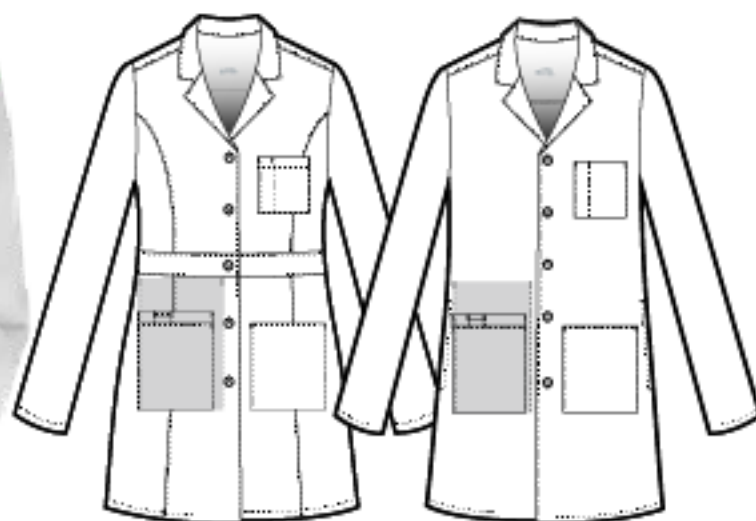
Build a strong uniform foundation
with garments that are designed tough
to pull a double shift, no sweat.

BASIC LAB COAT

- Two front lower pockets with utility loop, one pen slot, one cell phone pocket, one chest pocket with pen slot, and one inside tablet pocket
- Inset waistband
- Vented back

Available Sizes:
XXS - 5XL

WHIT



- ✦ Features:
- ✓ Long sleeves with button or zipper closure
 - ✓ Multiple pockets for convenience
 - ✓ Available in various sizes and colors

CONSULTATION COAT

- Two front lower pockets, one chest pocket with pen slot, and inner tablet pocket
- White logo embroidery at front lower left pocket
- Locker loop
- Back pleats with vented back

Available Sizes:
XXS - 5XL

WHIT



- ✦ Features:
- ✓ Long sleeves with button or zipper closure
 - ✓ Multiple pockets for convenience
 - ✓ Available in various sizes and colors

LONG LAB COAT

- Two front lower pockets, one chest pocket with pen slot, and inner tablet pocket
- White logo embroidery at front lower left pocket
- Locker loop
- Side access
- Vented sides and back
- Back pleats with vented sides and back

Available Sizes:
XXS - 5XL

WHIT



- ★ Features:
- ✓ Long sleeves with button or zipper closure
 - ✓ Multiple pockets for convenience
 - ✓ Available In various sizes and colors

UNISEX ORIGINS LAB COAT

- Two front lower pockets including one ERA TEX signature triple pocket with hidden mesh pocket and signature ID bungee loop, one scissors pocket at wearer's left side, and one chest pocket with pen slot
- Vented back

Available Sizes:
XXS - 5X

WHIT



- ★ Features:
- ✓ Long sleeves with button or zipper closure
 - ✓ Multiple pockets for convenience
 - ✓ Available In various sizes and colors



GOWNS & PAJAMAS

Build a strong uniform foundation
with garments that are designed tough
to pull a double shift, no sweat.

GOWNS & PAJAMAS

Comfortable | Fashionable

Fabric Composition:

- **65% Polyester, 35% Cotton**

Combines durability with breathability for long-lasting comfort.

- **100% Cotton**

Soft, highly breathable, and gentle on sensitive skin.

- **100% Flannel Cotton**

Warm, cozy, and perfect for colder environments.

Features:

- Lightweight and breathable fabrics for extended wear
- Various closure options: ties, snaps, or zippers
- Multiple sizes and colors for different needs

Adults Patient Gown



Available Pattern:
Customized

Available Colors:
Customized

Available Sizes:
XS - 5XL



Features:

- ✓ Loose-fit design for maximum comfort
- ✓ Back-tie or snap-button closure for easy wear
- ✓ Short or long sleeve options
- ✓ Available In various sizes and colors

Adults Patient Gown



Available Pattern:
Customized

Available Colors:
Customized

Available Sizes:
XS - 5XL



Features:

- ✓ Kimono-style sleeves for a relaxed, unrestricted fit
- ✓ Adjustable wrap-around closure for flexibility and coverage
- ✓ Lightweight and breathable fabric for patient comfort
- ✓ Available In various sizes and colors

Risk Identity Kit

The Risk Identity Kit is designed to enhance patient safety and identification in medical settings. Each item is color-coded to help healthcare staff quickly recognize patient risk levels, ensuring efficient care and protection.

Available Colors:
Customized

- Risk Identity Slippers
Non-slip, comfortable, and color-coded for safety.
- Risk Identity Blanket
Soft, breathable, and designed for patient warmth and identification.
- Risk Identity Bag
Durable and spacious for storing personal belongings securely.

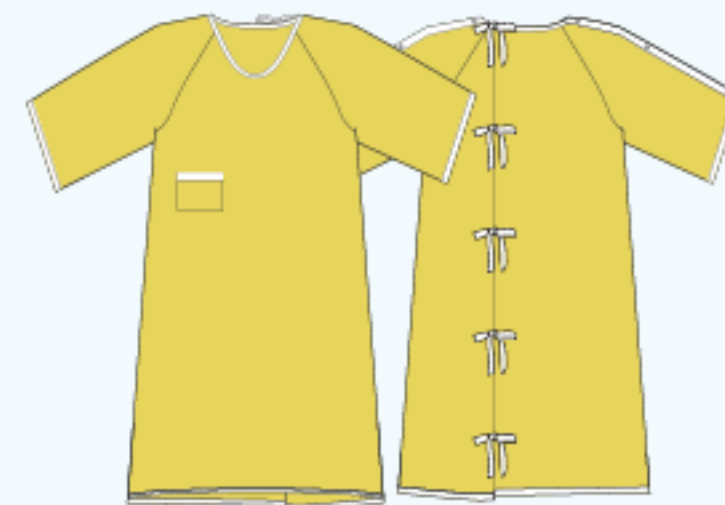


- Features:
- ✓ Color-coded system for quick patient identification
 - ✓ Soft, high-quality materials for comfort and durability
 - ✓ Machine-washable & easy to maintain
 - ✓ Available in multiple sizes and colors

Risk Identity Gown

Available Sizes:
XL - 3XL

Available Colors:
Customized



- Features:
- ✓ Color-coded design for easy patient identification
 - ✓ Loose-fit with back-tie or snap closure for comfort and accessibility
 - ✓ Soft, non-irritating fabric suitable for extended wear
 - ✓ Available in multiple sizes for a universal fit

Modest Criss-Cross Gown

The Modest Criss-Cross Gown is designed for full coverage, comfort, and functionality, making it ideal for hospital wear, maternity use, or home lounging.



Available Colors:
Customized

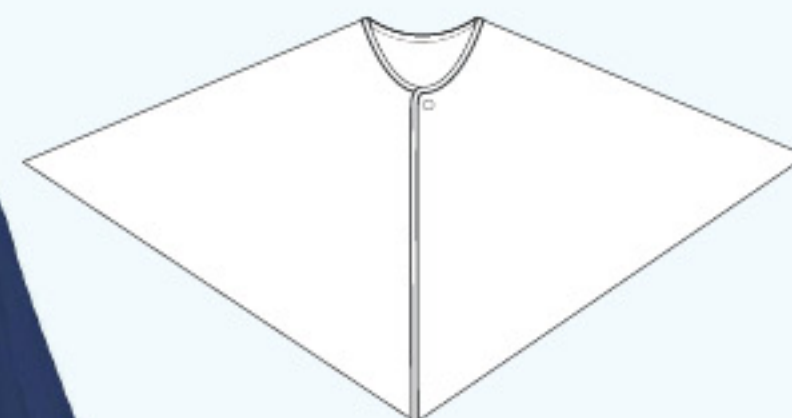
Available Sizes:
XS - 5XL

Features:

- ✓ Criss-cross front design for easy wear and modest coverage
- ✓ Adjustable tie closure for a secure and comfortable fit
- ✓ Long sleeves for extra coverage and warmth
- ✓ Available in various sizes and colors

Mammography Cape Gown

The Mammography Cape Gown is designed to provide modesty, comfort, and easy access during breast screenings and medical examinations.



Available Colors:
Customized

Available Sizes:
XL - 3XL

Features:

- ✓ Front-opening design for easy access during exams
- ✓ Short cape-style fit for modesty and patient comfort
- ✓ Adjustable tie or snap closure for a secure and flexible fit
- ✓ Available in various sizes and colors

Adults Pajama

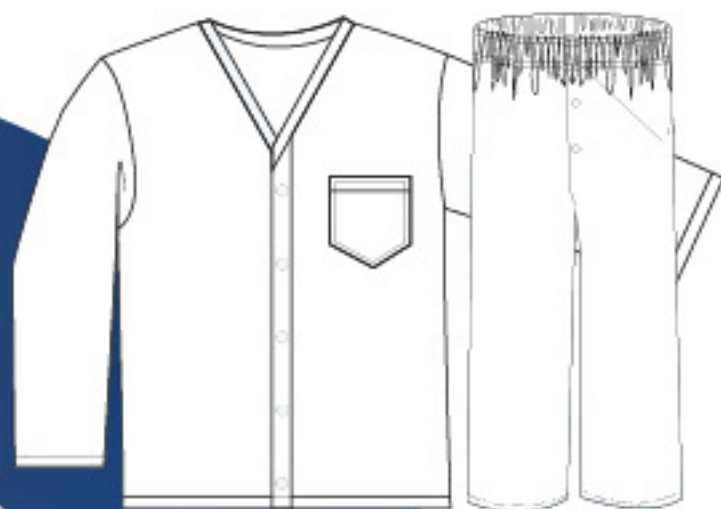
Available Pattern:
Customized

Available Sizes:
XXS - 5X

BLAC CARI CEIL
NAVY PEWT ROYA

Features:

- ✓ Long sleeves with button or zipper closure
- ✓ Multiple pockets for convenience
- ✓ Available in various sizes and colors



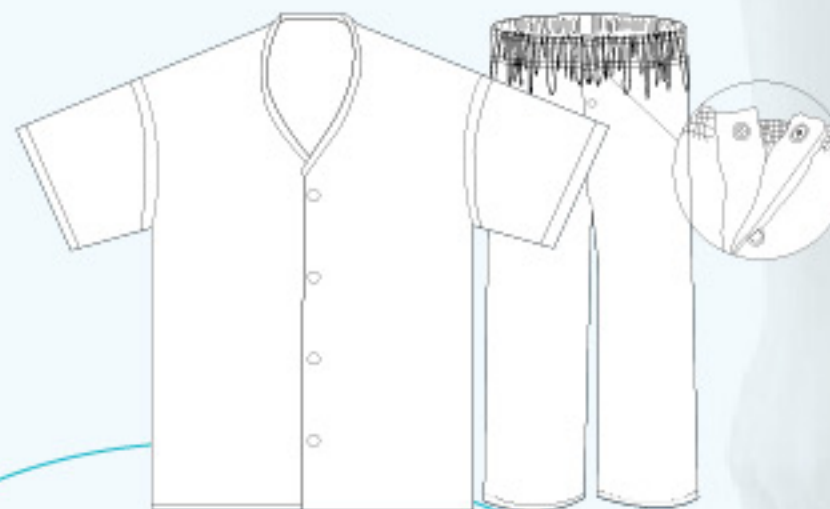
Available Colors:
Customized

Available Sizes:
XS - 5XL

Available Pattern:
Customized

Features:

- ✓ Criss-cross front design for easy wear and modest coverage
- ✓ Adjustable tie closure for a secure and comfortable fit
- ✓ Long sleeves for extra coverage and warmth
- ✓ Available in various sizes and colors



Pediatric Gown



The Pediatric Gown is designed to provide softness, safety, and ease of movement for children in medical or home care settings.



Pediatric Gown FIT
XS - L

Available Colors:
Customized

SPECIAL PATTERN FOR PEDIATRIC

- ★ Features:
- ✓ Loose-fitting design for comfort and unrestricted movement
 - ✓ Back tie or snap closure for easy dressing and security
 - ✓ Soft and breathable fabric to keep Pediatric comfortable
 - ✓ Available in fun colors and patterns to make hospital visits less intimidating

Pediatric Pajama

Our Pediatric Pajama set is designed for maximum comfort, softness, and breathability, making it perfect for hospital stays, home use, and everyday wear.



Pediatric Gown FIT
XS - L

Available Colors:
Customized

SPECIAL PATTERN FOR PEDIATRIC

- ★ Features:
- ✓ Two-piece set (top & pants) or one-piece coverall for convenience
 - ✓ Elastic waistband & relaxed fit for all-day comfort
 - ✓ Soft, breathable fabric to keep kids cozy and happy
 - ✓ Available in fun colors and patterns



BABY ONESIE

Wrap your baby in softness with our high-quality baby onesie, designed for ultimate comfort and care. Made from gentle, breathable fabrics perfect for delicate skin, this onesie features a practical snap-button or zipper design for easy dressing and diaper changes. Available in a variety of adorable colors and patterns, it's the perfect choice for your little one, no matter the occasion!

Available Sizes:
Newborn (NB) – Up to 3.5 kg

WHIT PINK BLUE



- Features:
- ✓ Soft and skin-friendly fabric
 - ✓ Practical design for easy changing
 - ✓ Cute and stylish colors & patterns
 - ✓ Suitable for all seasons

NEWBORN GOWN

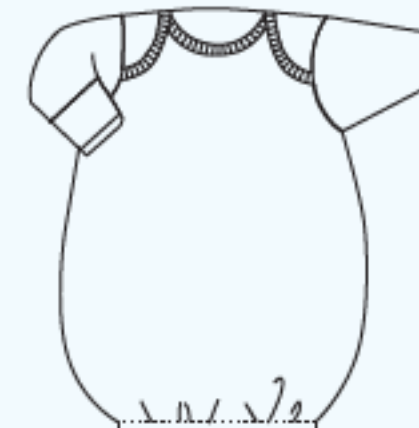
Keep your baby snug and comfortable with our adorable newborn gown, designed for ultimate ease and warmth. Made from ultra-soft, breathable fabric, this gown is gentle on delicate skin and provides a cozy fit for peaceful sleep. Featuring an elastic or tie-bottom design, it allows for quick diaper changes without hassle. Perfect for newborns, whether at home or on the go!

Available Sizes:
Newborn (NB) – Up to 3.5 kg

WHIT PINK BLUE



IV Gown | Mint



Gown | Unisex

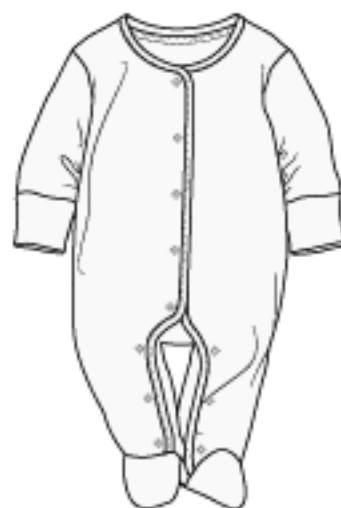
- Features:
- ✓ Soft and skin-friendly fabric
 - ✓ Practical design for easy changing
 - ✓ Cute and stylish colors & patterns
 - ✓ Suitable for all seasons

BABY COVERALLS

Keep your baby warm, cozy, and stylish with our soft and durable baby coveralls. Designed for all-day comfort, these coveralls are made from breathable, high-quality fabric that's gentle on delicate skin. Featuring a full-length design with snap buttons or a zipper for easy dressing and diaper changes, they provide both practicality and charm. Perfect for playtime, nap time, or outings!

🔧 Available Sizes:
👶 Newborn (NB) – Up to 3.5 kg

WHIT PINK BLUE



- 🌟 Features:
- ✓ Soft, breathable, and gentle fabric
 - ✓ Full-body coverage for warmth and protection
 - ✓ Easy snap-button or zipper closure for quick changes
 - ✓ Adorable unisex designs for any occasion

ESSENTIAL BABY SET

Give your baby the best care with our premium baby essentials set, including a soft towel, cozy cap, gentle mittens, and an absorbent bib. Designed for comfort and convenience, each item is made from high-quality, breathable fabric that's gentle on delicate skin. Perfect for daily use, this set keeps your baby warm, dry, and protected.

🔧 Available Sizes:
👶 Newborn (NB) – Up to 3.5 kg

WHIT PINK BLUE

- 🌟 Set Includes:
- ✓ Baby Towel
 - ✓ Baby Cap
 - ✓ Baby Mittens
 - ✓ Baby Bib



- 🔧 Available Sizes:
- ✓ Towel: Standard baby size (70x70 cm or 80x80 cm)
 - ✓ Cap & Mittens: Suitable for newborns & infants
 - ✓ Bib: Adjustable fit for newborns & babies

Perfect for newborns and an ideal gift for new parents! 🎁💕



FLAM RETARDANT
COMFORT & XTREME ARC

PROTECTIVE WEAR

UNIFORM

Nomex. Comfort

93% Nomex®, 5% Kevlar, 2% Anti-Static | 4.5 oz/yd² (153 g/m²) - 6.0 oz/yd² (203 g/m²)

Features

- 🔥 Flame-Resistant & Anti-Static
- 🧰 Durable & Comfortable

Nomex. Xtreme Arc

93% Nomex®, 5% Kevlar, 2% Anti-Static | 6.5 oz/yd² / 220 g/m² (woven)

Features

- ⚡ High-Performance Arc Flash Protection
- 🔥 Superior Flame Resistance
- 🛡️ Enhanced Durability & Comfort

Comfort for Everyday Protection
Xtreme Arc for Maximum Safety



SIZES: S - 5XL

KHAK

M.BLUE

RED

GREY

SHIRT WITH PINTUCKS LONG SLEEVE

- LONG SLEEVE SHIRT BUTTON CLOSURE
- TWO FRONT FLAP POCKETS, PLEAT AT BACK
- PEN POCKET ON LEFT SLEEVE
- NFPA 2112 APPROVED, TESTED BY AITEX

FABRIC

- 93% NOMEX - 4.5 OZ | 5% KEVLAR | 2% ANTI-STATIC
- NOMEX COMFORT
- Fire resistance up to 8 cal/cm².
- Medium weight and breathable, Ideal for prolonged use.
- High durability with reinforced stitching.



SIZES: 28-60

BLACK

NAVY

BLUE

TROUSER NON-PLEATED

- 4.5 OZ NOMEX COMFORT FABRIC
- METAL ZIPPER, NON-PLEATED
- TWO WELT BUTTONS POCKETS AT BACK
- NFPA 2112 APPROVED, TESTED BY AITEX

FABRIC

- 93% NOMEX - 4.5 OZ | 5% KEVLAR | 2% ANTI-STATIC
- NOMEX COMFORT
- Fire resistance up to 8 cal/cm².
- Medium weight and breathable, Ideal for prolonged use.
- High durability with reinforced stitching.



SIZES: S - 5XL

BLACK

NAVY

BLUE

WINTER HEAVY DUTY JACKET

- NOMEX COMFORT, WATER REPELLNT,
- HEAVY DUTY (3) LAYERS, COMFORT
- BRANDED ARAMID FIBER, STAND UP COLLAR
- METAL SNAP CLOSURE, DETACHABLE HOOD
- FULL SLEEVES WITH METAL SNAP CLOSURES
- NFPA 2112 APPROVED, TESTED BY AITEX

FABRIC

- 93% NOMEX - 4.5 OZ | 5% KEVLAR | 2% ANTI-STATIC
- NOMEX COMFORT
- Fire resistance up to 8 cal/cm².
- Medium weight and breathable, Ideal for prolonged use.
- High durability with reinforced stitching.



SIZES: 28-60

BLACK

NAVY

BLUE

CARGO TROUSER

- 4.5 OZ NOMEX COMFORT FABRIC
- METAL ZIPPER, NON-PLEATED
- TWO WELT BUTTONS POCKETS AT BACK
- NFPA 2112 APPROVED, TESTED BY AITEX

FABRIC

- 93% NOMEX - 4.5 OZ | 5% KEVLAR | 2% ANTI-STATIC
- NOMEX COMFORT
- Fire resistance up to 8 cal/cm².
- Medium weight and breathable, Ideal for prolonged use.
- High durability with reinforced stitching.



SIZES: S - 2XL

BLACK

NAVY

BLUE

LAB COAT

- 4.5 OZ NOMEX COMFORT FABRIC
- ONE POCKET AT FRONT WITHOUT FLAP
- TWO POCKETS AT WAIST
- SHIRT COLLAR, SNAP CLOSURE
- NFPA 2112 APPROVED, TESTED BY AITEX

FABRIC

- 93% NOMEX - 4.5 OZ | 5% KEVLAR | 2% ANTI-STATIC
- NOMEX COMFORT
- Fire resistance up to 8 cal/cm².
- Medium weight and breathable, Ideal for prolonged use.
- High durability with reinforced stitching.



SIZES: 28-54

BLACK

NAVY

BLUE

FLAM COVERALLS WITH REFLECTING

- 4.5 OZ NOMEX COMFORT FABRIC
- ONE PATCH POCKET WITH FLAP AT FRONT
- ONE PATCH POCKET WITHOUT FLAP AT FRONT WITH COLLAR
- TWO SET SNAP BUTTON IN FRONT
- ELASTIC AT BACK WAIST
- NFPA APPROVED, TESTED BY AITEX

FABRIC

- 93% NOMEX - 4.5 OZ | 5% KEVLAR | 2% ANTI-STATIC
- NOMEX COMFORT
- Fire resistance up to 8 cal/cm².
- Medium weight and breathable, Ideal for prolonged use.
- High durability with reinforced stitching.



SIZES: S - 5XL

M.BLUE RED GREY KHAK

LONG SLEEVE SHIRT WITH PINTUCKS

- LONG SLEEVE SHIRT BUTTON CLOSURE
- 6.5 OZ NOMEX COMFORT FABRIC
- TWO FRONT FLAP POCKETS, PLEAT AT BACK
- PEN POCKET ON LEFT SLEEVE
- NFPA 2112 APPROVED, TESTED BY AITEX

FABRIC

- Nomex[®], Kevlar[®], antistatic fiber
- 6.5 oz/yd² / 220 g/m² (woven)
- Protective performance: ATPV > 12 cal/cm²
- Enhanced protection for heavy-duty tasks in hazardous environments.
- Moisture-wicking properties for optimal comfort.



SIZES: 28-60

BLACK NAVY BLUE

TROUSER NON-PLEATED

- 6.5 OZ NOMEX COMFORT FABRIC
- METAL ZIPPER, NON-PLEATED
- TWO WELT BUTTONS POCKETS AT BACK
- NFPA 2112 APPROVED, TESTED BY AITEX

FABRIC

- Nomex[®], Kevlar[®], antistatic fiber
- 6.5 oz/yd² / 220 g/m² (woven)
- Protective performance: ATPV > 12 cal/cm²
- Enhanced protection for heavy-duty tasks in hazardous environments.
- Moisture-wicking properties for optimal comfort.



SIZES: XS - 4XL

BLACK

NAVY

BLUE

WINTER HEAVY DUTY JACKET

- NOMEX COMFORT, WATER REPELLANT,
- HEAVY DUTY (3) LAYERS, COMFORT
- BRANDED ARAMID FIBER, STAND UP COLLAR
- METAL SNAP CLOSURE, DETACHABLE HOOD
- FULL SLEEVES WITH METAL SNAP CLOSURES
- NFPA 2112 APPROVED, TESTED BY AITEX

FABRIC

- Nomex[®], Kevlar[®], antistatic fiber
- 6.5 oz/yd² / 220 g/m² (woven)
- Protective performance: ATPV > 12 cal/cm²
- Enhanced protection for heavy-duty tasks in hazardous environments.
- Moisture-wicking properties for optimal comfort.



SIZES: 28-60

BLACK

NAVY

BLUE

CARGO TROUSER

- 6.5 OZ NOMEX COMFORT FABRIC
- METAL ZIPPER, NON-PLEATED
- TWO WELT BUTTONS POCKETS AT BACK
- NFPA 2112 APPROVED, TESTED BY AITEX

FABRIC

- Nomex[®], Kevlar[®], antistatic fiber
- 6.5 oz/yd² / 220 g/m² (woven)
- Protective performance: ATPV > 12 cal/cm²
- Enhanced protection for heavy-duty tasks in hazardous environments.
- Moisture-wicking properties for optimal comfort.



SIZES: S - 2XL

BLACK

NAVY

BLUE

LAB COAT

- ONE POCKET AT FRONT WITHOUT FLAP
- TWO POCKETS AT WAIST
- SHIRT COLLAR, SNAP CLOSURE
- NFPA 2112 APPROVED, TESTED BY AITEX

FABRIC

- Nomex[®], Kevlar[®], antistatic fiber
- 6.5 oz/yd² / 220 g/m² (woven)
- Protective performance: ATPV > 12 cal/cm²
- Enhanced protection for heavy-duty tasks in hazardous environments.
- Moisture-wicking properties for optimal comfort.



SIZES: 28-54

BLACK

NAVY

BLUE

FLAM COVERALLS WITH REFLECTING

- Mens' flame resistant Coverall
- ONE PATCH POCKET WITH FLAP AT FRONT
- ONE PATCH POCKET WITHOUT FLAP AT FRONT WITH COLLAR
- TWO SET SNAP BUTTON IN FRONT
- ELASTIC AT BACK WAIST
- NFPA APPROVED, TESTED BY AITEX

FABRIC

- Nomex[®], Kevlar[®], antistatic fiber
- 6.5 oz/yd² / 220 g/m² (woven)
- Protective performance: ATPV > 12 cal/cm²
- Enhanced protection for heavy-duty tasks in hazardous environments.
- Moisture-wicking properties for optimal comfort.



PROTECTIVE WEAR

UNIFORM


ERA TEX - 8 CAL | 88% Cotton | 12% Nylon | 4.5 OZ - 240 GSM

Features

- 🔥 Flame-Resistant & Anti-Static
- 🧰 Durable & Comfortable

ERA TEX - 12 CAL | 88% Cotton | 12% Nylon | 6 OZ - 300 GSM

Features

- ⚡ High-Performance Arc Flash Protection
 - 🔥 Superior Flame Resistance
 - 🛡️ Enhanced Durability & Comfort
- 

8 CAL for Everyday Protection
12 CAL for Maximum Safety



SIZES: S - 5XL

KHAK

M.BLUE

RED

GREY

SHIRT WITH PINTUCKS LONG SLEEVE

- LONG SLEEVE SHIRT BUTTON CLOSURE
- TWO FRONT FLAP POCKETS, PLEAT AT BACK
- PEN POCKET ON LEFT SLEEVE
- NFPA 2112 APPROVED, TESTED BY AITEX

FABRIC

- 88% Cotton | 12% Nylon
- 4.5 OZ
- Fire resistance up to 8 cal/cm².
- Medium weight and breathable, Ideal for prolonged use.
- High durability with reinforced stitching.



SIZES: 28-60

BLACK

NAVY

BLUE

TROUSER NON-PLEATED

- 4.5 OZ NOMEX COMFORT FABRIC
- METAL ZIPPER, NON-PLEATED
- TWO WELT BUTTONS POCKETS AT BACK
- NFPA 2112 APPROVED, TESTED BY AITEX

FABRIC

- 88% Cotton | 12% Nylon
- 4.5 OZ
- Fire resistance up to 8 cal/cm².
- Medium weight and breathable, Ideal for prolonged use.
- High durability with reinforced stitching.



SIZES: S - 5XL

BLACK

NAVY

BLUE

WINTER HEAVY DUTY JACKET

- ERA TEX COMFORT, WATER REPELLNT,
- HEAVY DUTY (3) LAYERS, COMFORT
- STAND UP COLLAR
- METAL SNAP CLOSURE, DETACHABLE HOOD
- FULL SLEEVES WITH METAL SNAP CLOSURES
- NFPA 2112 APPROVED, TESTED BY AITEX

FABRIC

- 88% Cotton | 12% Nylon
- 4.5 OZ
- Fire resistance up to 8 cal/cm².
- Medium weight and breathable, Ideal for prolonged use.
- High durability with reinforced stitching.



SIZES: 28-60

BLACK

NAVY

BLUE

CARGO TROUSER

- 4.5 OZ ERA TEX COMFORT FABRIC
- METAL ZIPPER, NON-PLEATED
- TWO WELT BUTTONS POCKETS AT BACK
- NFPA 2112 APPROVED, TESTED BY AITEX

FABRIC

- 88% Cotton | 12% Nylon
- 4.5 OZ
- Fire resistance up to 8 cal/cm².
- Medium weight and breathable, Ideal for prolonged use.
- High durability with reinforced stitching.



SIZES: S - 2XL

BLACK

NAVY

BLUE

LAB COAT

- 4.5 OZ ERA TEX COMFORT FABRIC
- ONE POCKET AT FRONT WITHOUT FLAP
- TWO POCKETS AT WAIST
- SHIRT COLLAR, SNAP CLOSURE
- NFPA 2112 APPROVED, TESTED BY AITEX

FABRIC

- 88% Cotton | 12% Nylon
- 4.5 OZ
- Fire resistance up to 8 cal/cm².
- Medium weight and breathable, Ideal for prolonged use.
- High durability with reinforced stitching.



SIZES: 28-54

BLACK

NAVY

BLUE

FLAM COVERALLS WITH REFLECTING

- 4.5 OZ ERA TEX COMFORT FABRIC
- ONE PATCH POCKET WITH FLAP AT FRONT
- ONE PATCH POCKET WITHOUT FLAP AT FRONT WITH COLLAR
- TWO SET SNAP BUTTON IN FRONT
- ELASTIC AT BACK WAIST
- NFPA APPROVED, TESTED BY AITEX

FABRIC

- 88% Cotton | 12% Nylon
- 4.5 OZ
- Fire resistance up to 8 cal/cm².
- Medium weight and breathable, Ideal for prolonged use.
- High durability with reinforced stitching.



SIZES: S - 5XL

M.BLUE RED GREY KHAK

LONG SLEEVE SHIRT WITH PINTUCKS

- LONG SLEEVE SHIRT BUTTON CLOSURE
- TWO FRONT FLAP POCKETS, PLEAT AT BACK
- PEN POCKET ON LEFT SLEEVE
- NFPA 2112 APPROVED, TESTED BY AITEX

FABRIC

- 88% Cotton | 12% Nylon
- Weight : 300gsm | 6.5 OZ
- Protective performance: ATPV > 12 cal/cm²
- Enhanced protection for heavy-duty tasks in hazardous environments.
- Moisture-wicking properties for optimal comfort.



SIZES: 28-60

BLACK NAVY BLUE

TROUSER NON-PLEATED

- METAL ZIPPER, NON-PLEATED
- TWO WELT BUTTONS POCKETS AT BACK
- NFPA 2112 APPROVED, TESTED BY AITEX

FABRIC

- 88% Cotton | 12% Nylon
- Weight : 300gsm | 6.5 OZ
- Protective performance: ATPV > 12 cal/cm²
- Enhanced protection for heavy-duty tasks in hazardous environments.
- Moisture-wicking properties for optimal comfort.



SIZES: S - 5XL

BLACK NAVY BLUE

WINTER HEAVY DUTY JACKET

- WATER REPELLANT, HEAVY DUTY (3) LAYERS
- STAND UP COLLAR
- METAL SNAP CLOSURE, DETACHABLE HOOD
- FULL SLEEVES WITH METAL SNAP CLOSURES
- NFPA 2112 APPROVED, TESTED BY AITEX

FABRIC

- 88% Cotton | 12% Nylon
- Weight : 300gsm | 6.5 OZ
- Protective performance: ATPV > 12 cal/cm²
- Enhanced protection for heavy-duty tasks in hazardous environments.
- Moisture-wicking properties for optimal comfort.



SIZES: 28-60

BLACK NAVY BLUE

CARGO TROUSER

- 6.5 OZ ERA TEX COMFORT FABRIC
- METAL ZIPPER, NON-PLEATED
- TWO WELT BUTTONS POCKETS AT BACK
- NFPA 2112 APPROVED, TESTED BY AITEX

FABRIC

- 88% Cotton | 12% Nylon
- Weight : 300gsm | 6.5 OZ
- Protective performance: ATPV > 12 cal/cm²
- Enhanced protection for heavy-duty tasks in hazardous environments.
- Moisture-wicking properties for optimal comfort.



SIZES: S - 2XL

BLACK NAVY BLUE

LAB COAT

- ONE POCKET AT FRONT WITHOUT FLAP
- TWO POCKETS AT WAIST
- SHIRT COLLAR, SNAP CLOSURE
- NFPA 2112 APPROVED, TESTED BY AITEX

FABRIC

- 88% Cotton | 12% Nylon
- Weight : 300gsm | 6.5 OZ
- Protective performance: ATPV > 12 cal/cm²
- Enhanced protection for heavy-duty tasks in hazardous environments.
- Moisture-wicking properties for optimal comfort.



SIZES: 28-54

BLACK NAVY BLUE

FLAM COVERALLS WITH REFLECTING

- Mens' Arc Flash Coverall
- ONE PATCH POCKET WITH FLAP AT FRONT
- ONE PATCH POCKET WITHOUT FLAP AT FRONT WITH COLLAR
- TWO SET SNAP BUTTON IN FRONT
- ELASTIC AT BACK WAIST
- NFPA APPROVED, TESTED BY AITEX

FABRIC

- 88% Cotton | 12% Nylon
- Weight : 300gsm | 6.5 OZ
- Protective performance: ATPV > 12 cal/cm²
- Enhanced protection for heavy-duty tasks in hazardous environments.
- Moisture-wicking properties for optimal comfort.

®  ERATEX

FACILITIES WEAR

SECURITY

Comfortable | Fashionable



SHIRT

LONG SLEEVE



TWO POCKETS WITH FLAPS AND BOX PLEAT
EPAULETTES IN SHOULDER
EYELET PATCH IN LHS
PINTUCKS IN FRONT AND BACK

Available Colors:
Customized

SIZES: S - 5XL



SHIRT

SHORT SLEEVE

TWO POCKETS WITH FLAPS AND BOX PLEAT
EPAULETTES IN SHOULDER
EYELET PATCH IN LHS
PINTUCKS IN FRONT AND BACK
EMBROIDERY AT FRONT OR WITHOUT

Available Colors:
Customized

SIZES: S - 5XL



SHIRT POLO SHORT SLEEVE

POLO SHIRT WITH NAISOD EMBROIDERY ON LEFT SLEEVE
SECURITY EMBROIDERY IN ENGLISH ON THE BACK
LOGO ON THE RIGHT SLEEVE, VERTICAL BADGE
HOLDER ON THE LEFT CHEST, AND HORIZONTAL TAG
NAME HOLDER ON THE RIGHT CHEST.

Available Colors:
Customized

SIZES: S-3XL



CARGO TROUSER

CARGO TROUSER WITH SIX POCKETS, TWO ON BOTH SIDE
(BOX PLATED) WITH FLAP VELCRO FASTENING BACK POK
ET BAGGY STYLE WITH FLAP SMALL RADIO LOOP ON BOTH
SIDE ADJUTANT TO CROSS POCKET -7 LOOPS.

Available Colors:
Customized

SIZES: 30-54



BASEBALL CAP

P-CAP
ADJUSTABLE VELCRO-FITTING HEAD COVER
FRONT VISOR
WITH OR WITHOUT LOGO

Available Colors:
Customized

SIZES REGULAR



SECURITY HAT

ROUNDED CROWN
SEMICIRCLE VISOR
BAND ATTACHED WITH TWO GOLD BUTTONS

Available Colors:
Customized

SIZES 6-3/8 to 7-1/2



SHIRT RSCC

LONG SLEEVE



COLLAR BUTTON DOWN
ONE FRONT POCKET
COLLAR WITH NECK BAND

Available Colors:
Customized

SIZES 14-21



TROUSER RSCC

WAIST BAND WITH BELT HOLDER
TWO BACK POCKETS

Available Colors:
Customized

SIZES 28-52





Chefwear

Look cool, stay cooler

Build a strong uniform foundation with garments that are designed tough to pull a double shift, no sweat.



Unisex classic chef coat

Unisex classic chef coat

White [WHT]

Black [BLK]

Steel Grey [SGY]



Unisex ultimate chef pants



Unisex traditional chef pants

Black [BLK]

Pinstripe [PIN]

Houndstooth [HSH]

Unisex cook shirt



Aprons



Unisex apron short bib

HOUSEKEEPING TUNIC & PANT

Available Colors:
Customized

SIZES: XS - 4XL



SHIRT SHORT SLEEVES

Available Colors:
Customized

SIZES: XS - 4XL

