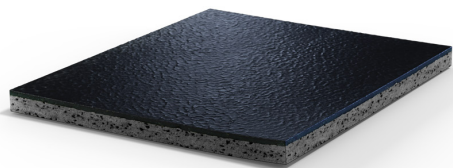


RAMFLEX 10 MM



Prefabricated indoor sport flooring in a constant 10 mm thickness, consisting of natural and synthetic calendered and vulcanized rubber. Surface is hammered, opaque, non slip, anti-bacterial, marble-effect with uniform composition in 2,2 mm. This wear layer is vulcanized onto a load bearing, low hardness, low density, and flexible subfloor with a high content of recycled post-consumer material.

The product is Phthalate-free, bisphenol-A free, isocyanate-free and has less than 5% plasticizers. The biobased carbon content is approximately 20% of the total organic carbon (certification according to ASTM D6866-21, Method B).

The product has been certified in compliance with International schemes and standards for Indoor Air Quality programs (VOC, Volatile Organic Compounds emissions) like Greenguard, Greenguard Gold (UL Certification Program) and

Environmental Product Declaration (EPD).

The flooring system contains at least 10% of raw materials classified as recycled, recovered or as by-products.

The surface has excellent natural antibacterial characteristics, without the addition of biocidal ingredients inside the product: in tests carried out according to ISO 22196, the killing of inoculated bacteria exceeds 99,999% in 24 hours, with an antimicrobial activity factor "R" greater than 5.

Non porous rubber surface provides ease of maintenance and antibacterial protection against MRSA and odors. The use of rubber brings specific advantages in front of other materials, like no need of weld rods for installation and a superior protection against intensive use.

Due to its excellent resistance to cutting or ripping, this product is ideal for gymnasiums and fitness centers, particularly for those areas where the flooring must withstand heavy weights of sport equipment.

It is also suitable for ice skating rings, as it resists particularly well to wear abrasion from ice skating blades.

STANDARDS

This product has been certified to be in compliance with European Standards EN 14041 including Declaration Of Performance (DoP, CE marking) and it is rated Euroclass Cfl-s2 in accordance with EN 13501.

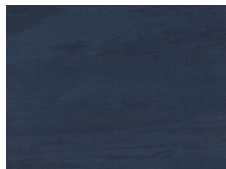
This product has been certified in compliance with the following schemes and standards for Indoor Air Quality programs (VOC, Volatile Organic Compounds emissions):

- Greenguard and Greenguard Gold (UL Certification Program).
- French scope (2011-321): Class A+.
- Italian regulation CAM (Minimum Environmental Criteria) following D.M. 06/23/2022.

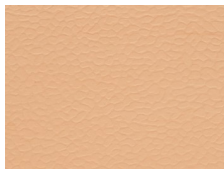
This article is produced in compliance with the European Regulation REACH (Registration, Evaluation, Authorization and Restriction of Chemicals).

This product is designed and manufactured according to UNI EN ISO 9001 certification and is supplied by an ISO 50001, ISO 9001:2015 and ISO 14001:2015 certified company.

COLOR RANGE



986



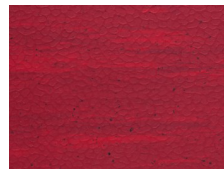
920



712



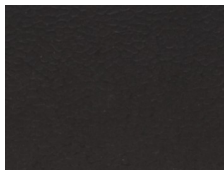
710



741



715



790



707

This color range is to be used as a guideline only.

INSTALLATION AND MAINTENANCE

The product must be stored and installed in appropriate conditions, including suitable protected premises at guaranteed minimum and maximum temperatures and humidity, as fully described in MONDO's *Storage and Installation Instructions*.

The product must be used and maintained following the premises described in MONDO's *Use and Maintenance Instructions*.

DIMENSIONS

| Thickness | Length | Width | Weight | Tile Size |
|-----------|--------|--------|------------------------|------------------|
| 10 mm | 9 m | 186 cm | 13.5 kg/m ² | 91.35 x 91.35 cm |

For additional product information, please refer to the Technical Data Sheet.



SUITABLE FOR

Indoor Sport Facilities

- Ice Hockey - Ice Arena
- Strength & Conditioning
- Fitness - Strength Cardio
- Fitness - Mobility / Stability
- Fitness - Heavy Duty Strength
- Fitness - Fitness Classes