



Canada
Ontario



Ministry of Education

GRADE 9 TO 12

- Canadian Curriculum
- OSSD Diploma
- Full & Dual Certification
- International Pathway



ADMISSION OPEN

2026-2027: INTAKE EVERY 2 MONTHS

CANADIAN HIGH SCHOOL



WETELWORLD.COM - ONE WORLD - ONE EDUCATION



GLOBAL CONTACT +971 542856426, +971 542652608



Full & Dual High School Diploma

WeTel Canadian High School

(Online OSSD Canadian Curriculum From Grades 9 to 12)

Important Emails

For Admissions
admission@wetelworld.org
For Students
academics@wetelworld.org
For Corporate
business@wetelworld.com
For Tech/LMS
support@wetelworld.com

About US!

WeTel Global Presence



SWEDEN I CANADA I
AUSTRALIA I ESTONIA I
UAE I KSA I INDIA I EGYPT

WeTel is a global education organization headquartered in Sweden. We offer internationally recognized high school curricula from Canada campus, creating strong pathways for higher education worldwide. The UAE serves as our central hub, bridging communication and time zones between Europe, Canada, Australia, and regions across Asia and Africa, ensuring smooth coordination and student support. Through this integrated model, WeTel makes global education accessible and achievable.



WeTel Headquarter (Front Office View)

WeTel International Education AB Sweden

Registration No.: 556541-4868
Address: Toftavägen 24 a, 261-75, Asmundtorp,
Sweden. Tel: +46 70 373 54 64



Toronto Campus

William Academy Canada
School Registration: Ontario Education Ministry,
BSID Number 889106 and 668187.
Address: Victoria Park Toronto, Tel: +14164916888



Marketing & Support Office

SwedTEFL LLC
Registration No.: 5785944
Abu Dhabi, United Arab Emirates
Tel: +971 542652608

WeTel International Board



Tatsiana Turgot
Principal WeTel School

Tatsiana Turgot, born in Sweden, brings over 15 years of professional experience across Europe and actively engages in international professional networks, contributing to knowledge exchange and fostering academic-industry collaboration.



Johan Sten
CEO



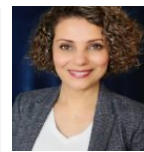
Dr. Bader Aljaberi, Director



Prof. Adil Matin
Group President



Dr. Mohamed El Naggari, Director



Principal Heidi Nazer
William Academy



Jeff Weng, Director
William Academy



Axel Johan
Operations



Rana Soliman
Program Coordinator



Karl Sten
Finance

WeTel Canadian High School

Global Education | Canadian Excellence | Future-Ready Students

WeTel Canadian High School is an international education organization established in Sweden, delivering globally recognized high school education to students across the world. With a strong international presence, WeTel provides flexible, future-focused academic pathways designed for students seeking global university opportunities.

Canadian High School

Program (OSSD)

Through its academic collaboration with William Academy, a recognized institution listed under the Ontario Ministry of Education (BSID: 889106 & 668187), WeTel offers the **Ontario Secondary School Diploma (OSSD)**. The OSSD is a globally respected high school qualification from Canada, widely accepted by universities worldwide.

Program Structure

(Grades 9 to 12)

The OSSD program is designed for students from Grade 9 to Grade 12, offering flexibility, academic quality, and international progression pathways.

- Admissions Open for: Grade 9 to 12
- Intake: Every 2 months
- Academic Session Start: June 2026

Two Flexible Learning Pathways Online

A. Dual Diploma Program

(Part-Time Parallel Learning)

Ideal for students who wish to continue their current school education while earning an international diploma.

Key Features:

- Study alongside your existing school (CBSE / British / IB, etc.)
- Complete only 8–9 OSSD credits over 4 years (Grade 9–12)
- Light academic load with online sessions
- Strong international university pathway

Student Advantage:

- No need to leave current school
- Gain a second international qualification
- Build global academic profile early

B. Full Diploma Program

(Full-Time Online Learning)

Ideal for students who want a complete Canadian high school education.

Key Features:

- 30 credits over 4 years (Grade 9–12)
- Fully aligned with Canadian curriculum standards
- 100% focused OSSD pathway

Student Advantage:

- Direct entry to global universities
- International curriculum exposure
- Flexible, modern learning environment



Admissions & Assessment Overview

Compulsory Subjects: English as second language IELTS 5.5 (Writing \geq 5.0) or higher.

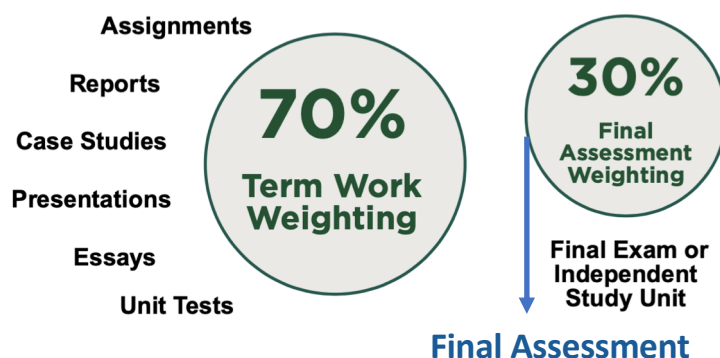
Plus: OSSLT: Ontario Secondary School Literacy Test (OSSLT), which is required to obtain the OSSD. If students do not pass the OSSLT, they will be required to take an additional course (OLC40) which will add to the total number of courses.

OBTAIN YOUR ONTARIO SECONDARY SCHOOL DIPLOMA (OSSD)

We provides flexible assessment structures for online students, particularly those taking 8 or 30 credits to fulfill Ontario Secondary School Diploma (OSSD) requirements. Assessments focus on monitoring growth and ensuring the 110-hour curriculum requirement is met.

Assessment Structure and Methods

- Initial Diagnostic:** Upon enrollment, students may write placement tests in English and Mathematics to determine their current academic standing.
- Ongoing Assessment:** Assessments include a combination of quizzes, tests, assignments, and a final exam for each course.
- Online/Part-Time Flexibility:** Part-time students can choose between Basic (weekly feedback) and Facilitated (weekly live meetings) options.
- Performance Monitoring:** The school utilizes progress reports to monitor student growth, particularly for those in virtual or part-time, condensed 1-month summer courses.

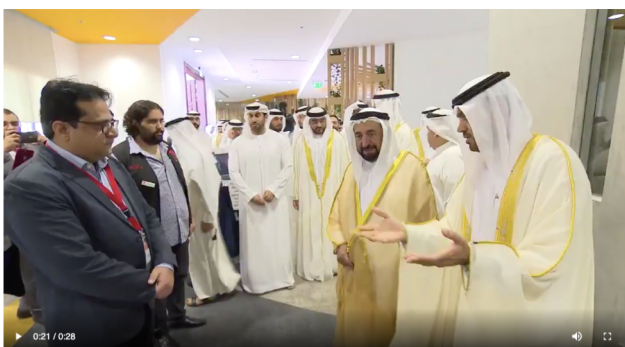


Canada Campus

Based on the academic standards for Ontario private school, the grading system for high school credit courses (Grades 9-12) follows the Ministry of Education requirements, regardless of whether a student is full-time or part-time.

- Final Grade Composition:** The final grade for any credit course is determined by two components:
 - Term Work (70%):** Evaluation of knowledge, understanding, thinking, communication, and application conducted throughout the course.
 - Final Evaluation (30%):** A final examination, capstone project, or final essay conducted at the end of the course.
- Grading Scale:** Students receive percentage grades (0-100%) for their credit courses, with 50% being the minimum required to pass and earn the credit.
- OSSD Alignment:** As an accredited institution, William Academy's grades lead toward the Ontario Secondary School Diploma (OSSD).

For online students specifically taking a set number of credits, the grading structure remains consistent with these provincial standards to ensure the credits are recognized for university or college applications.



WETEL CANADIAN HIGH SCHOOL

Ontario Secondary School Diploma (OSSD)

Welcome to the OSSD Journey

This document is designed to help parents understand how their child will successfully complete the Ontario Secondary School Diploma.

What Makes OSSD Valuable?

- Globally recognized qualification
- Direct pathway to top universities
- Skill-based learning approach

Program Pathways

Full Diploma: 30 credits over 3–4 years

Dual Diploma: 7–10 OSSD credits alongside home country school

Parent Responsibilities

Parents agree to: - Monitor student progress - Ensure attendance and participation - Support academic honesty

Student Success Factors

- Consistent attendance
- Timely submission of work
- Active communication with teachers

Graduation Checklist

30 Credits ENG4U completed 6 Grade 12 U/M courses OSSLT passed 40
community hours

OSSD Admission Policy & Minimum Credit Requirements (WeTel School)

1. Policy Overview

This document outlines the admission criteria, minimum credit requirements, and PLAR (Prior Learning Assessment and Recognition) equivalency for students enrolling in the Ontario Secondary School Diploma (OSSD) under Full Diploma and Dual Diploma pathways.

2. OSSD Program Grade 9 to Grade 12 Requirements

- Full Diploma: Minimum 30 credits in four years from Grade 9 to Grade 12
- Dual Diploma: 7–10 OSSD credits
- Mandatory: ENG4U and minimum 6 Grade 12 (4U/M) courses for university pathways.

A. Grade 9 Entry

Full Diploma:

- PLAR: 0 credits
- Credits Required: 30
- Annual Credit Load: 8, 8, 7, 7

Dual Diploma:

- PLAR: Up to 16 credits
- Credits Required: 8–10
- Annual Credit Load: 1–2, 2–3, 2–3, 2

B. Grade 10 Entry

Full Diploma:

- PLAR: ~8 credits
- Credits Required: ~22
- Annual Load: 8, 7, 7

Dual Diploma:

- PLAR: 16–18 credits
- Credits Required: 7–9
- Annual Load: 1–2 + summer 2, then 2–3, then 2

C. Grade 11 Entry

Full Diploma:

- PLAR: ~16 credits
- Credits Required: ~14
- Annual Load: 7, 7

Dual Diploma:

- PLAR: 20–22 credits
- Credits Required: 6–8
- Annual Load: 2–3 + summer 2, then 3

D. Grade 12 Entry

Full Diploma:

- PLAR: 22 credits
- Credits Required: 8
- Annual Load: 8

Dual Diploma:

- PLAR: Up to 24 credits
- Credits Required: 6–7
- Annual Load: 3–4 + additional if needed

3. Compliance Notes

PLAR is subject to transcript evaluation. All students must meet Ontario Ministry of Education requirements. Final credit decisions remain with the school.

A. FOR DUAL DIPLOMA

OSSD CREDIT STRUCTURE AND COURSE CODES

For Students joining in Grade 9	Grade 9	Grade 9 Summer	Grade 10	Grade 10 Summer	Grade 11		Grade 11 Summer	Grade 12	
Number of courses	1	2	3	4	5	6	7	8	9
Course/Subject									
Name*Mapping for Computer Science	BBB4M	ENG2D	ENG3U	MCR3U	MHF4U	MCV4U	ENG4U	BOH4M	ICS4U
Mapping for Business/Commerce	BBB4M	ENG2D	ENG3U	MCR3U	MHF4U	MCV4U	ENG4U	BOH4M	CIA4U
Mapping for Medical/Health Science	BBB4M	ENG2D	ENG3U	MCR3U	MHF4U	MCV4U	ENG4U	SCH4U	SBI4U
Mapping for Math/Engineering	BBB4M	ENG2D	ENG3U	MCR3U	MHF4U	MCV4U	ENG4U	SCH4U	SPH4U
Mapping for Social Sciences	BBB4M	ENG2D	ENG3U	MCR3U	HSB4U	CGW4U	ENG4U	CHY4U	HSC4M

For Students joining in Grade 10	Grade 10			Grade 10 Summer	Grade 11		Grade 11 Summer	Grade 12	
Number of courses	1	2	3	4	5	6	7	8	9
Mapping for Computer Science	BBB4M	ENG2D	ENG3U	MCR3U	MHF4U	MCV4U	ENG4U	BOH4M	ICS3U
Mapping for Business/Commerce	BBB4M	ENG2D	ENG3U	MCR3U	MHF4U	MCV4U	ENG4U	BOH4M	CIA4U
Mapping for Medical/Health Science	BBB4M	ENG2D	ENG3U	MCR3U	MHF4U	MCV4U	ENG4U	SCH4U	SBI4U
Mapping for Math/Engineering	BBB4M	ENG2D	ENG3U	MCR3U	MHF4U	MCV4U	ENG4U	SCH4U	SPH4U
Mapping for Social Sciences	BBB4M	ENG2D	ENG3U	MCR3U	HSB4U	CGW4U	ENG4U	CHY4U	HSC4M

For Students joining in Grade 11	Grade 11				Grade 11 Summer	Grade 12			
Mapping for Computer Science	1	2	3	4	5	6	7	8	
Mapping for Computer Science	ENG3U	MCR3U	MHF4U	MCV4U	ENG4U	BBB4M	BOH4M	ICS4U	
Mapping for Business/Commerce	ENG3U	MCR3U	MHF4U	MCV4U	ENG4U	BBB4M	BOH4M	CIA4U	
Mapping for Medical/Health Science	ENG3U	MCR3U	MHF4U	MCV4U	ENG4U	BBB4M	SCH4U	SBI4U	
Mapping for Math/Engineering	ENG3U	MCR3U	MHF4U	MCV4U	ENG4U	BBB4M	SCH4U	SPH4U	
Mapping for Social Sciences	ENG3U	MCR3U	HSB4U	CGW4U	ENG4U	BBB4M	CHY4U	HSC4M	

For Students joining in Grade 12	Grade 12								
Number of courses	1	2	3	4	5	6	7		
Mapping for Computer Science	ENG3U	ENG4U	MHF4U	MCV4U	BBB4M	BOH4M	ICS4U		
Mapping for Business/Commerce	ENG3U	ENG4U	MHF4U	MCV4U	BBB4M	BOH4M	CIA4U		
Mapping for Medical/Health Science	ENG3U	ENG4U	MHF4U	MCV4U	BBB4M	SCH4U	SBI4U		
Mapping for Math/Engineering	ENG3U	ENG4U	MHF4U	MCV4U	BBB4M	SCH4U	SPH4U		
Mapping for Social Sciences	ENG3U	ENG4U	HSB4U	CGW4U	BBB4M	CHY4U	HSC4M		

B. FOR FULL DIPLOMA

OSSD CREDIT STRUCTURE AND COURSE CODES

For Students joining in Grade 9	Grade 9 Credits: FORMAT: 8+8+8+6=30 CREDITS IN 4 YEARS							
Number of courses	1	2	3	4	5	6	7	8
Course/Subject Name*Mapping for Computer Science	CGC1W	PPL1O	MTH1W	SNC1W	ENL1W	AVI1O		
Mapping for Business/Commerce	CGC1W	PPL1O	MTH1W	SNC1W	ENL1W	AVI1O		
Mapping for Medical/Health Science	CGC1W	PPL1O	MTH1W	SNC1W	ENL1W	AVI1O		
Mapping for Math/Engineering	CGC1W	PPL1O	MTH1W	SNC1W	ENL1W	AVI1O		
Mapping for Social Sciences	CGC1W	PPL1O	MTH1W	SNC1W	ENL1W	AVI1O		

For Students joining in Grade 10	Grade 10 Credits: FORMAT: 8+8+6=22 CREDITS IN 3 YEARS + 9TH GRADE 8 PLAR CREDITS = 30 CREDITS							
Number of courses	1	2	3	4	5	6	7	8
Course/Subject Name*Mapping for Computer Science	ENG2D	MPM2D	SNC2D	AVI2O	CHC2D	GLC2O	CHV2O	CIA4U
Mapping for Business/Commerce	ENG2D	MPM2D	SNC2D	AVI2O	CHC2D	GLC2O	CHV2O	BAF3M
Mapping for Medical/Health Science	ENG2D	MPM2D	SNC2D	AVI2O	CHC2D	GLC2O	CHV2O	HSP3U
Mapping for Math/Engineering	ENG2D	MPM2D	SNC2D	AVI2O	CHC2D	GLC2O	CHV2O	CIA4U
Mapping for Social Sciences	ENG2D	MPM2D	SNC2D	AVI2O	CHC2D	GLC2O	CHV2O	CIA4U

For Students joining in Grade 11	Grade 11 Credits: FORMAT: 8+6=14 CREDITS IN 2 YEARS + 9TH & 10th GRADE 16 PLAR CREDITS = 30 CREDITS							
Number of courses	1	2	3	4	5	6	7	8
Course/Subject Name*Mapping for Computer Science	ENG3U	MCR3U	ICS3U	SPH3U	SCH3U	AVI3M	HSP3U	BAF3M
Mapping for Business/Commerce	ENG3U	MCR3U	BAF3M	SBI3U	HFC3M	AVI3M	SCH3U	ICS3U
Mapping for Medical/Health Science	ENG3U	MCR3U	SBI3U	SCH3U	HSP3U	AVI3M	ICS3U	SPH3U
Mapping for Math/Engineering	ENG3U	MCR3U	SPH3U	ICS3U	SBI3U	AVI3M	HFC3M	BAF3M
Mapping for Social Sciences	ENG3U	MCR3U	HSP3U	HFC3M	SCH3U	AVI3M	SPH3U	ICS3U

For Students joining in Grade 12	Grade 12 Credits: FORMAT: 6+1=7 CREDITS IN 1 YEAR + 9TH, 10th, 11th GRADE 24 PLAR CREDITS = 30 CREDITS							
Number of courses	1	2	3	4	5	6	7	8
Course/Subject Name*Mapping for Computer Science	ENG4U	MHF4U	MCV4U	ICS4U	SPH4U	MDM4U	CHY4U	BOH4M
Mapping for Business/Commerce	ENG4U	MHF4U	MCV4U	BBB4M	BOH4M	SCH4U	CHY4U	BAT4M
Mapping for Medical/Health Science	ENG4U	MHF4U	MCV4U	SBI4U	SCH4U	HFA4U	CHY4U	SPH4U
Mapping for Math/Engineering	ENG4U	MHF4U	MCV4U	BAT4M	MDM4U	SBI4U	CHY4U	BBB4M
Mapping for Social Sciences	ENG4U	MHF4U	MCV4U	HFA4U	PSK4U	MDM4U	CHY4U	SBI4U

WeTel School

(Legal Acceptance & Compliance Document)

This is an official guide and legal acknowledgment for students and parents enrolling in the Ontario Secondary School Diploma (OSSD) programme through WeTel International Education AB, Sweden, in collaboration with William Academy.

1. ORGANISATION & DELIVERY

WeTel International Education AB (Sweden) facilitates the OSSD programme in association with William Academy, an official group institution under its academic umbrella.

2. PROGRAMME UNDERSTANDING

Students and parents acknowledge that:

- A. OSSD is governed by Ontario Ministry of Education guidelines.
- B. Dual Diploma and Full Diploma pathways have different credit and PLAR requirements.
- C. Academic progression depends on successful completion of required credits.

3. PLAR & ACADEMIC COMPLIANCE

All previous academic records must be authentic and verifiable. PLAR (Prior Learning Assessment & Recognition) is subject to evaluation. Any discrepancy, misrepresentation, or failure in document verification may result in:

- Immediate suspension or discontinuation
- Requirement to restart courses or academic years
- Adjustment in credit allocation

4. ENROLLMENT CONDITIONS

Admission is granted based on submitted academic records and eligibility. Students must comply with academic integrity, attendance, and assessment policies.

5. NO REFUND POLICY

All fees paid are strictly non-refundable under any circumstances.

6. LIABILITY DISCLAIMER

Enrollment is undertaken voluntarily by students and parents after understanding: Programme structure, Academic requirements, International recognition aspects. WeTel shall not be held legally or financially responsible for: Visa outcomes, University admissions decisions, External regulatory changes. Any indirect or future consequences

7. CODE OF CONDUCT & BRAND PROTECTION

Students and parents agree that:

They shall not publish, post, or circulate any content that may harm the reputation of: WeTel World School, Its staff, management, or board members

Any defamatory, misleading, or harmful communication (direct or indirect), including on social media, will be treated as a legal violation. No surrogate or negative promotional activity against WeTel or its associated entities is permitted.

8. TERMINATION RIGHTS

WeTel reserves the right to: Suspend or terminate enrollment for non-compliance. Take legal action in case of reputational damage or misconduct

9. FINAL DECLARATION

By enrolling, students and parents confirm: Acceptance of all academic, financial, and legal terms. Understanding of risks, benefits, and obligations. Commitment to comply with all programme requirements

10. WeTel may charge, modify, update all terms and conditions without prior notice to any parent or student and partner.