

## What expert users say about BiopSee

### ‘Simply gives you the best prostate biopsy in the world.’

“This system allows for exceptionally precise biopsies in a very easy way. In addition to integrating mri data, it captures every sample location in all 3 dimensions. Thus we can attribute to each biopsy sample and/or positive finding its aggressiveness and exact location.”

Asst Prof Boris Hadaschik md  
Urology Department, University Hospital Heidelberg, Germany

### ‘With BiopSee I can give my patients peace of mind.’

“Whether a patient has a rising PSA level but with negative prior biopsies, or coming for the first diagnosis, BiopSee offers me and my patients the comfort of conclusive knowledge. BiopSee simply minimizes the chance of false negatives.”

Dr Kasra Taymoorian md febu  
Koblenz, Germany

### ‘State-of-the-art biopsy without any barriers.’

“The beauty of BiopSee is that it makes state-of-the-art prostate biopsies accessible to any urologist and therefore to any patient up and down the country.”

Mr. Christoph Kastner phd frcs (Urol.) febu, Urological Surgeon  
Cambridge University Hospitals, U.K.

### ‘The perfect tool to pinpoint lesions.’

“The future of focal therapy depends entirely on the possibility to exactly localise and hit cancerous lesions in the prostate. BiopSee is the perfect tool to achieve this.”

Prof Dr Ulf Tunn md  
Urology Clinic, Offenbach am Main, Germany

# BiopSee

Stereotactic Targeted Prostate Biopsy



visions. innovations. solutions.

#### Website

[www.biopsee-online.com](http://www.biopsee-online.com)

#### Manufacturer

MedCom GmbH  
Darmstadt, Germany

# BiopSee

Stereotactic Targeted Prostate Biopsy



Be **spot-on** with **BiopSee®**

## What if you could

Easily target and access every part of the prostate in an extremely precise and reproducible manner with minimal risk of infection for your patients, monitoring each step through superior quality ultrasound with the confidence of stereotactic planning and navigation.

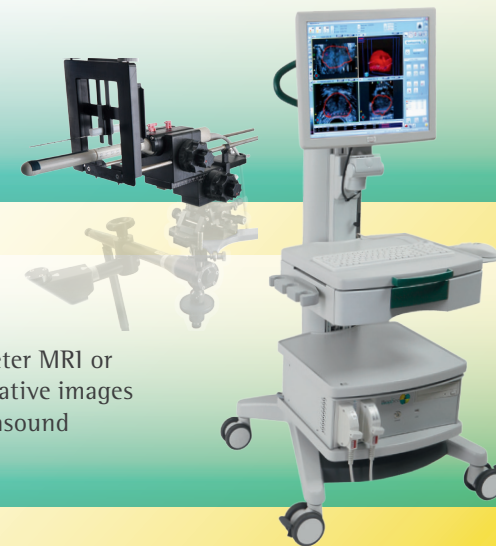
## Then if we tell you

Now you can achieve all of this with a single intelligent system that gives you minimal chance of false negatives thanks to tranperineal stereotactic image-guided planning and needle navigation, with the confidence of superior documentation and reporting.

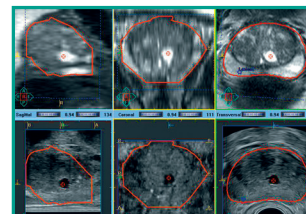
Be **spot-on** with BiopSee®

# BiopSee

## Stereotactic Targeted Prostate Biopsy



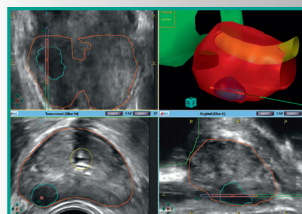
All within a single integrated system



### 1.

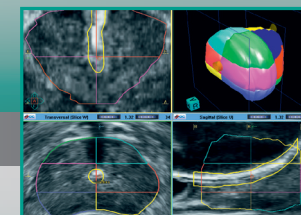
Use and fuse multi-parameter MRI or any other type of pre-operative images with superior 3-D live ultrasound

- Merges the best of both worlds: mri efficacy and u/s efficiency
- Ultimate reproducibility and operator independence
- State-of-the-art technology for everyday practice

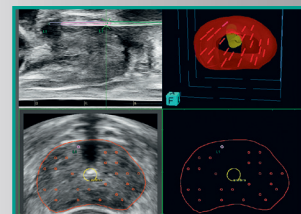


### 2..

Pinpoint target areas and plan exact tranperineal needle paths



- Full access to apical-ventral prostate region
- Short and simple biopsy procedure entirely done by Urologist
- Minimum infection and complication risk



### 3...

Achieve the perfect biopsy using high-precision needle navigation

- Use & fuse any dicom format, e.g. mri, pet/ct, HistoScanning®, elastography, colour Doppler
- Combine targeted and systematic biopsy in a single procedure
- Automatic documentation of all relevant information and 3-d data