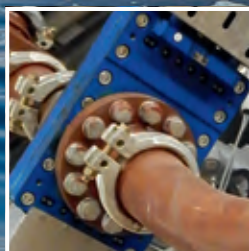
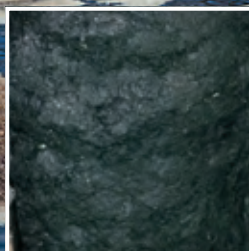


AT 300 / AT 750



OUR SOLUTIONS FOR DEWATERED SEWAGE SLUDGE



AT 300 / AT 750

Domino Knife Gate Valve

AT 300

Domino Knife Gate Valve PN 25

For dewatered sewage sludge or biomass, lug type gate valve for clamping between flanges EN 1092-1 PN 10 – PN 40

Face-to-face

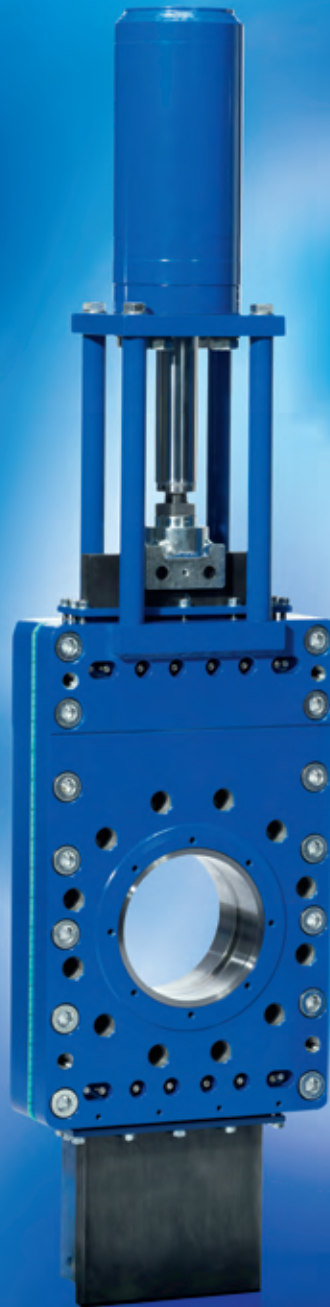
dimension:	EN 558-1 series 16
Body:	GGG40
Gate valve plate:	Stainless steel 1.4301
Sealing:	NBR (EPDM, FPM)
Nominal width:	DN 100 – DN 300

AT 750

Domino High Pressure Knife Gate Valve PN 100

With a gate valve plate, for dewatered sewage sludge or biomass, flange gate valve and for clamping between PN 10 – PN 100 flanges

Body:	Steel/stainless steel
Gate valve plate:	Stainless steel (hardened)
Sealing:	NBR or EPDM etc.
Nominal width:	DN 50 – DN 300



AT 750



AT 300

THE SPECIALISTS

for special applications

Your main area of application is in piping systems for the extraction of machine-dewatered sewage sludge or biomass with high dry matter contents. Even materials with a dry matter content of up to 50% are conveyed in piping systems with the help of pistons, screw pumps or eccentric pumps. Due to the long pipelines and geodetic heights in the systems, delivery pressures of 20 to 50 bar arise, in some applications even higher. Pipelines and especially the valve technology must be able to adapt to the extreme requirements.

The GEFA knife gate valves of the AT 300 series, which can be used at pump pressures of max. 40 bar have proven themselves in these areas for years. The fields of application can

be found, for example, on chamber filter presses or centrifuges for sewage sludge drying, storage and loading of dewatered sewage sludge or in piping systems in fermentation and biogas plants.

For higher requirements, GEFA Processtechnik GmbH has added the AT 750 series to its product range. This covers applications with operating pressures of up to 100 bar. In a sewage treatment plant in southern Germany, for example, ball valves that became stiff after a few switching operations due to the storage of medium in the dead spaces, that had to be removed for inspection, were successfully replaced with these valves.

High Pressure Knife Gate Valves on Putzmeister piston pumps

AT 750 - DN 200 PN 100 hydraulically operated.

Medium: Substrate 18 – 40% DS
Pressure: max. 70 bar
(depending on the pump pressure)
Temperature: max. 55 °C

Application wastewater treatment plant

Installation of DOMINO Knife Gate Valve AT 750 DN 150 PN 100 as a replacement for the ball valves previously installed, which blocked after a few operations by storing medium in the dead spaces.

Installation: 2014 sewage treatment plant
Steinhäule Neu-Ulm
Installation location: pressure pipe Putzmeister pump PN 100
Medium: dewatered sewage sludge 24 – 28% TS
Operating pressure: max. 50 bar, operating temperature: 20 °C
Switching frequency: 10/year (pressure free)
Actuation: AUMA electric drive, rising stem



The High Pressure Knife Gate Valves on Putzmeister piston pumps



Medium: Residual waste substrate



Installed AT 750 DN 150, PN 100 with built-in electric actuator



Previously installed, pneumatically operated ball valves DN 150 PN 100. Often not operable after only 2 switching cycles.

Our product areas



BUTTERFLY VALVES



KNIFE GATE VALVES



BALL VALVES



FILTER TECHNOLOGY



GEFA Prozesstechnik GmbH has been offering you innovative solutions in the fields of industrial valves and filtration technology since 1964.

We also have a wide range of products for specific applications and are happy to work with you to develop customised solutions for your requirements. We attach great importance to quality, innovative strength and expertise.

We are characterised by a strong international presence. We are represented in more than 20 countries worldwide. Our extensive warehousing guarantees short delivery times and a quick response to your requirements.

Legal form:	Limited liability company
Capital stock:	1,54 million Euro
Managing director:	Benjamin Ploeger
Establishment and development:	The company was registered as a limited liability company in the Commercial Register on 15.09.1965
Branch and products:	Industrial valves - Filter technology
Employees:	140 employees
Turnover:	approx. 30 million Euro
Business premises:	The office and factory building (Germaniastraße 28 in Dortmund) is owned by the company, office building / factory building and warehouse 6,770 square meters, company premises approx. 13,000 square meters
Warehouse:	approx. 7 million euro



Germaniastraße 28
D-44379 Dortmund
Postfach 700110
D-44371 Dortmund

Phone +49 231 61009-0
Telefax +49 231 61009-80
www.gefa.com/en
gefa@gefa.com